

## LIFR Polyclonal Antibody

Catalog No: #41969



Package Size: #41969-1 50ul #41969-2 100ul

Orders: [order@signalwayantibody.com](mailto:order@signalwayantibody.com)Support: [tech@signalwayantibody.com](mailto:tech@signalwayantibody.com)

## Description

|                       |   |
|-----------------------|---|
| Product Name          | LIFR Polyclonal Antibody  |
| Host Species          | Rabbit  |
| Clonality             | Polyclonal  |
| Purification          | The antibody was affinity-purified from rabbit antiserum by affinity-chromatography using epitope-specific immunogen. |
| Applications          | WB ELISA  |
| Species Reactivity    | Hu  |
| Specificity           | LIFR Polyclonal Antibody detects endogenous levels of LIFR protein.   |
| Immunogen Type        | peptide   |
| Immunogen Description | Synthesized peptide derived from the Internal region of human LIFR.   |
| Target Name           | LIFR  |
| Other Names           | LIFR; Leukemia inhibitory factor receptor; LIF receptor; LIF-R; CD118   |
| Accession No.         | Swiss-Prot: P42702NCBI Gene ID: 3977  |
| SDS-PAGE MW           | 120kd   |
| Concentration         | 1mg/ml  |
| Formulation           | Liquid in PBS containing 50% glycerol, 0.5% BSA and 0.02% sodium azide.   |
| Storage               | Store at -20°C/1 year   |

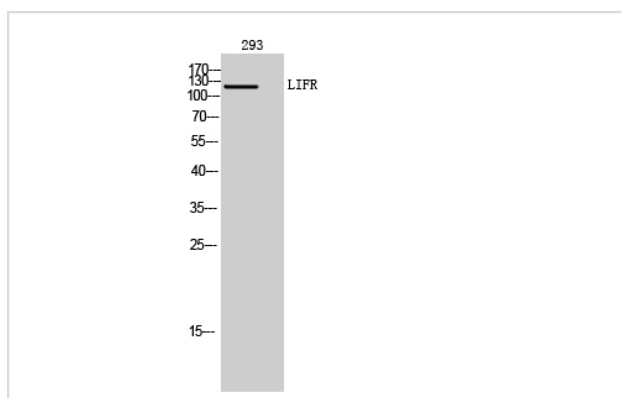
## Application Details

Western Blot: 1/500 - 1/2000.

ELISA: 1/10000.

Not yet tested in other applications.

## Images



Western Blot analysis of 293 cells using LIFR Polyclonal Antibody

---

Note: This product is for in vitro research use only and is not intended for use in humans or animals.