

## CD155 Polyclonal Antibody

Catalog No: #41992



Package Size: #41992-1 50ul #41992-2 100ul

Orders: [order@signalwayantibody.com](mailto:order@signalwayantibody.com)Support: [tech@signalwayantibody.com](mailto:tech@signalwayantibody.com)

## Description

Product Name	CD155 Polyclonal Antibody
Host Species	Rabbit
Clonality	Polyclonal
Purification	The antibody was affinity-purified from rabbit antiserum by affinity-chromatography using epitope-specific immunogen.
Applications	WB ELISA
Species Reactivity	Hu Ms Rt
Specificity	CD155 Polyclonal Antibody detects endogenous levels of CD155 protein.
Immunogen Type	peptide
Immunogen Description	Synthesized peptide derived from the Internal region of human CD155.
Target Name	CD155
Other Names	PVR; PVS; Poliovirus receptor; Nectin-like protein 5; NECL-5; CD155
Accession No.	Swiss-Prot: P15151NCBI Gene ID: 5817
SDS-PAGE MW	45kd
Concentration	1mg/ml
Formulation	Liquid in PBS containing 50% glycerol, 0.5% BSA and 0.02% sodium azide.
Storage	Store at -20°C/1 year

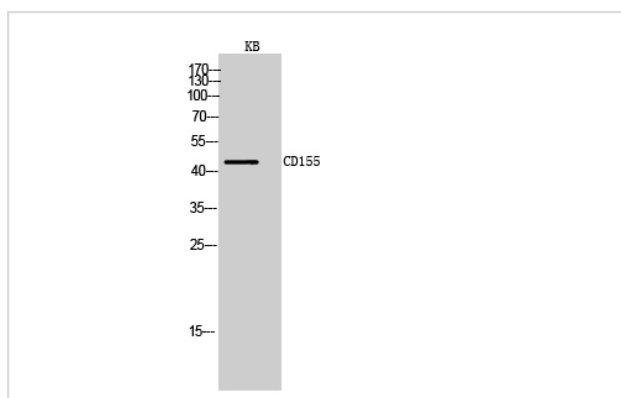
## Application Details

Western Blot: 1/500 - 1/2000.

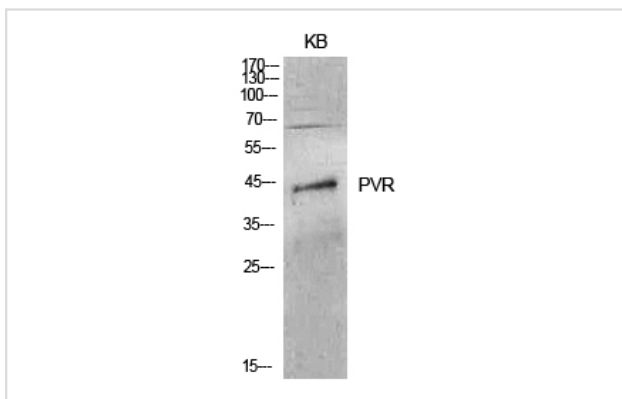
ELISA: 1/10000.

Not yet tested in other applications.

## Images



Western Blot analysis of KB cells using CD155 Polyclonal Antibody



Western Blot analysis of KB cells using CD155 Polyclonal Antibody

## Published Papers

el at., CD155 Cooperates with PD-1/PD-L1 to Promote Proliferation of Esophageal Squamous Cancer Cells via PI3K/Akt and MAPK Signaling Pathways. In *Cancers (Basel)* on 2022 Nov 15 by Xiyang Tan, Jie Yang, et al.. PMID:36428703, , (2022)

[PMID:36428703](#)

Note: This product is for in vitro research use only and is not intended for use in humans or animals.