

## CD300d Polyclonal Antibody

Catalog No: #42000



Package Size: #42000-1 50ul #42000-2 100ul

Orders: [order@signalwayantibody.com](mailto:order@signalwayantibody.com)Support: [tech@signalwayantibody.com](mailto:tech@signalwayantibody.com)

## Description

Product Name	CD300d Polyclonal Antibody
Host Species	Rabbit
Clonality	Polyclonal
Purification	The antibody was affinity-purified from rabbit antiserum by affinity-chromatography using epitope-specific immunogen.
Applications	WB ELISA
Species Reactivity	Human;Mouse;Rat
Specificity	CD300d Polyclonal Antibody detects endogenous levels of CD300d protein.
Immunogen Description	Synthesized peptide derived from the Internal region of human CD300d.
Target Name	CD300d
Other Names	CD300LD; CD300D; CMRF35A4; CMRF35-like molecule 4; CLM-4; CD300 antigen-like family member D; CMRF35-A4; CD300d
Accession No.	Swiss-Prot: Q6UXZ3NCBI Gene ID: 100131439
SDS-PAGE MW	22kd
Concentration	1mg/ml
Formulation	Liquid in PBS containing 50% glycerol, 0.5% BSA and 0.02% sodium azide.
Storage	Store at -20°C/1 year

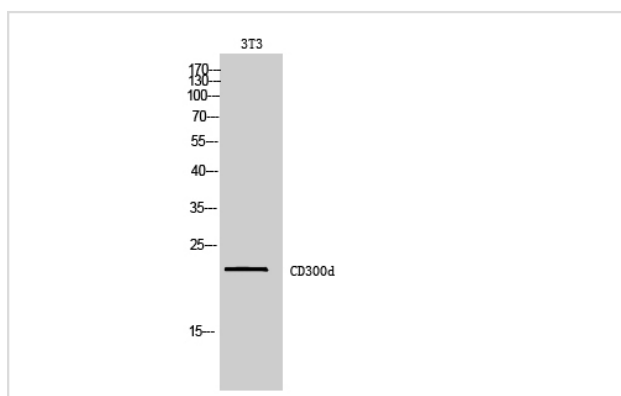
## Application Details

Western Blot: 1/500 - 1/2000.

ELISA: 1/10000.

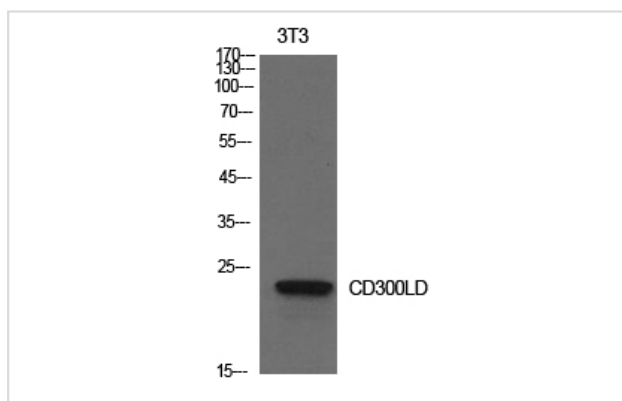
Not yet tested in other applications.

## Images



Western Blot analysis of 3T3 cells using CD300d Polyclonal Antibody

Western Blot analysis of NIH-3T3 cells using CD300d Polyclonal Antibody



Note: This product is for in vitro research use only and is not intended for use in humans or animals.