

chromogranin A Monoclonal Antibody

Catalog No: #42019



Package Size: #42019-1 50ul #42019-2 100ul

Orders: order@signalwayantibody.com

Support: tech@signalwayantibody.com

Description

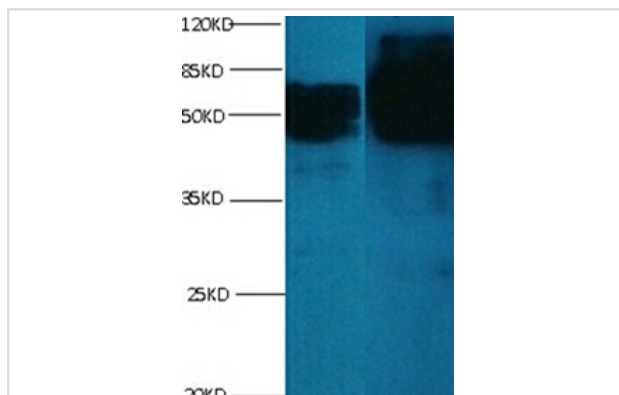
Product Name	chromogranin A Monoclonal Antibody
Host Species	Mouse
Clonality	Monoclonal
Purification	protein G purified
Applications	WB IHC
Species Reactivity	Hu
Specificity	specific for Recombinant CHGA Protein denatured and native forms
Immunogen Type	protein
Immunogen Description	Recombinant CHGA Protein
Target Name	chromogranin A
Other Names	Chromogranin-A, CgA, Pituitary secretory protein I, SP-I, Vasostatin II, CHGA
Accession No.	Swiss-Prot#: P10645
Calculated MW	52kd
Concentration	1.0mg/mL
Formulation	Preservative: 0.03% Proclin 300 Constituents: 50% Glycerol, 0.01M PBS, PH 7.4
Storage	Store at -20°C

Application Details

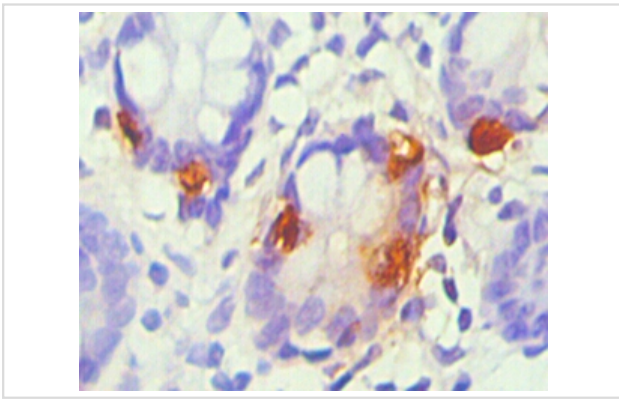
Western blotting: □ 1:500 - 1:1000

Immunohistochemistry: 1:20 - 1:200

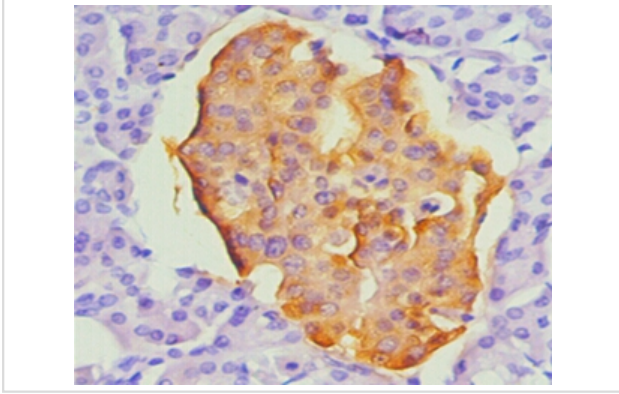
Images



All lanes : Chromogranin-A transfected E.coli lysate
 Line 1: Mouse Anti-6*his monoclonal antibody at 1ug/m
 Line2 : Mouse anti- Chromogranin-A monoclonal antibody at ug/ml
 Predicted band size : 52Kd
 Observed band size : 52kd



Immunohistochemical analysis of paraffin-embedded Human small intestine tissue using #42019 at dilution of 1:200.



Immunohistochemical analysis of paraffin-embedded Human pancreas tissue using #42019 at dilution of 1:200.

Background

Chromogranin A is a member of the granin family of neuroendocrine secretory proteins. It is located in secretory vesicles of neurons and endocrine cells. Chromogranin A is the precursor to several functional peptides including vasostatin, pancreastatin, catestatin and parastatin. These peptides negatively modulate the neuroendocrine function of the releasing cell (autocrine) or nearby cells (paracrine). CgA is one of the most used tumor markers in NET's (neuroendocrine tumors) , and elevated CgA concentrations have been demonstrated in serum or plasma of patients with different types of these tumors. However, CgA is not a tumor-specific antigen for NETs, and an abnormal concentration has been described in some non-malignant diseases such as renal failure, heart failure, proton pump inhibition, gastritis, hypertension, or patients with liver diseases.

Note: This product is for in vitro research use only and is not intended for use in humans or animals.