

Beta-2-microglobulin Monoclonal Antibody

Catalog No: #42031



Package Size: #42031-1 50ul #42031-2 100ul

Orders: order@signalwayantibody.comSupport: tech@signalwayantibody.com

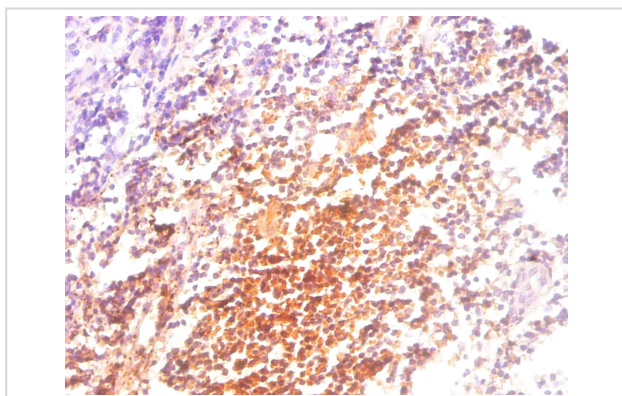
Description

Product Name	Beta-2-microglobulin Monoclonal Antibody
Host Species	Mouse
Clonality	Monoclonal
Purification	protein G purified
Applications	IHC
Species Reactivity	Hu
Specificity	specific for B2M denatured and nature forms
Immunogen Type	protein
Immunogen Description	Recombinant human Beta-2-microglobulin protein
Target Name	Beta-2-microglobulin
Other Names	B2M; CDABP0092; HDCMA22P
Accession No.	Swiss-Prot#: P61769
Concentration	1.0mg/mL
Formulation	Preservative: 0.03% Proclin 300 Constituents: 50% Glycerol, 0.01M PBS, PH 7.4
Storage	Store at -20°C

Application Details

Immunohistochemistry: 1:20 - 1:200

Images



Immunohistochemical analysis of paraffin-embedded human Tonsil tissue using #42031 at dilution of 1:200.

Background

Beta 2 Microglobulin non-covalently associates with the 44 kDa alpha chain to form the HLA Class I antigen complex. Human beta 2 Microglobulin associated with HLA Class I antigens are expressed on many types of cells including lymphocytes, thymocytes, monocytes, granulocytes, platelets, endothelial cells, and epithelial cells. It is absent on erythrocytes.

References

[1] Sharifiaghdas F, Kashi AH, Eshratkhah R. Evaluating Percutaneous Nephrolithotomy-Induced Kidney Damage by Measuring Urinary Concentrations of β_2 -Microglobulin. Urol J. 2011 Fall;8(4):277-82. [2] Johnston O, Cassidy H, O'Connell S, O'Ri

Note: This product is for in vitro research use only and is not intended for use in humans or animals.