

# C-C motif chemokine 2 Monoclonal Antibody

Catalog No: #42032

Package Size: #42032-1 50ul #42032-2 100ul

Orders: [order@signalwayantibody.com](mailto:order@signalwayantibody.com)Support: [tech@signalwayantibody.com](mailto:tech@signalwayantibody.com)

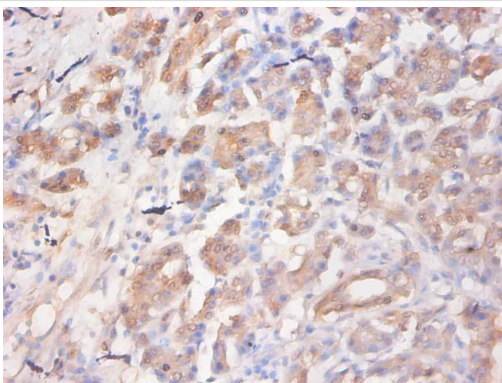
## Description

|                       |   |
|-----------------------|---|
| Product Name          | C-C motif chemokine 2 Monoclonal Antibody   |
| Host Species          | Mouse   |
| Clonality             | Monoclonal  |
| Purification          | protein G purified  |
| Applications          | IHC   |
| Species Reactivity    | Hu  |
| Specificity           | specific for human C-C motif chemokine 2 denatured and native forms   |
| Immunogen Type        | protein   |
| Immunogen Description | Recombinant Human C-C motif chemokine 2   |
| Target Name           | C-C motif chemokine 2   |
| Other Names           | Monocyte chemoattractant protein 1, Monocyte chemotactic and activating factor, Monocyte chemotactic protein 1, Monocyte secretory protein JE, Small-inducible cytokine A2, CCL2, MCP1, SCYA2 |
| Accession No.         | Swiss-Prot#: P13500   |
| Concentration         | 1.0mg/mL  |
| Formulation           | Preservative: 0.03% Proclin 300 Constituents: 50% Glycerol, 0.01M PBS, PH 7.4   |
| Storage               | Store at -20°C  |

## Application Details

Immunohistochemistry: 1:20 - 1:200

## Images



Immunohistochemical analysis of paraffin-embedded human pancreas using #42032 at dilution of 1:50.

## Background

Chemotactic factor that attracts monocytes and basophils but not neutrophils or eosinophils. Augments monocyte anti-tumor activity. Has been implicated in the pathogenesis of diseases characterized by monocytic infiltrates, like psoriasis, rheumatoid arthritis or atherosclerosis. May be involved in the recruitment of monocytes into the arterial wall during the disease process of atherosclerosis. [1] "Cloning and sequencing of the cDNA

for human monocyte chemotactic and activating factor (MCAF)."Furutani Y., Nomura H., Notake M., Oyamada Y., Fukui T., Yamada M., Larsen C.G., Oppenheim J.J., Matsushima K.Biochem. Biophys. Res. Commun. 159:249-255(1989) [2] "The human homolog of the JE gene encodes a monocyte secretory protein."Rollins B.J., Stier P., Ernst T., Wong G.G.Mol. Cell. Biol. 9:4687-4695(1989) [3] "Human monocyte chemoattractant protein-1 (MCP-1). Full-length cDNA cloning, expression in mitogen-stimulated blood mononuclear leukocytes, and sequence similarity to mouse competence gene JE."Yoshimura T., Yuhki N., Moore S.K., Appella E., Lerman M.I., Leonard E.J.FEBS Lett. 244:487-493(1989)

## References

[1] "Cloning and sequencing of the cDNA for human monocyte chemotactic and activating factor (MCAF)."Furutani Y., Nomura H., Notake M., Oyamada Y., Fukui T., Yamada M., Larsen C.G., Oppenheim J.J., Matsushima K.Biochem. Biophys. Res. Commun. 1

Note: This product is for in vitro research use only and is not intended for use in humans or animals.