

## BSA Monoclonal Antibody

Catalog No: #42050



Package Size: #42050-1 50ul #42050-2 100ul

Orders: order@signalwayantibody.com

Support: tech@signalwayantibody.com

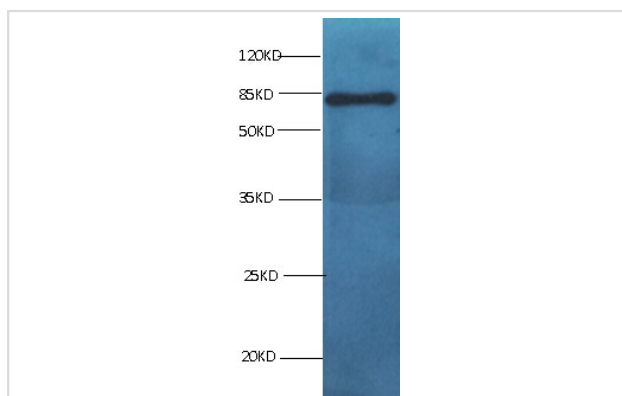
## Description

Product Name	BSA Monoclonal Antibody
Host Species	Mouse
Clonality	Monoclonal
Purification	protein G purified
Applications	WB IHC
Species Reactivity	B
Specificity	specific for bovine Serum albumin denatured and native forms
Immunogen Type	protein
Immunogen Description	bovine Serum albumin
Target Name	BSA
Other Names	BSA, Serum albumin
Accession No.	Swiss-Prot#: P02769
Calculated MW	67kd
Concentration	1.0mg/mL
Formulation	Preservative: 0.03% Proclin 300 Constituents: 50% Glycerol, 0.01M PBS, PH 7.4
Storage	Store at -20°C

## Application Details

Western blotting:  1:500 - 1:1000

## Images



All lanes : Mouse Anti-BSA monoclonal antibody at 1ug/ml  
 Line 1: Bovine serum Albumin  
 Predicted band size : 67kd  
 Observed band size : 67kd

## Background

Serum albumin, the main protein of plasma, has a good binding capacity for water, Ca<sup>2+</sup>, Na<sup>+</sup>, K<sup>+</sup>, fatty acids, hormones, bilirubin and drugs. Its main function is the regulation of the colloidal osmotic pressure of blood. Major zinc transporter in plasma, typically binds about 80% of all plasma zinc.

---

Note: This product is for in vitro research use only and is not intended for use in humans or animals.