

# Lys-63-specific deubiquitinase BRCC36 Polyclonal Antibody

Catalog No: #42084

Orders: [order@signalwayantibody.com](mailto:order@signalwayantibody.com)Support: [tech@signalwayantibody.com](mailto:tech@signalwayantibody.com)

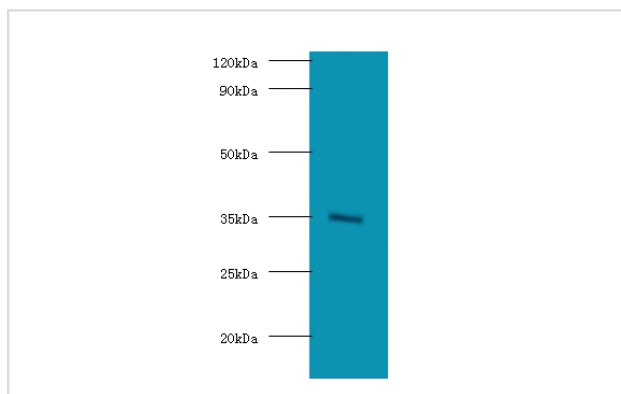
## Description

Product Name	Lys-63-specific deubiquitinase BRCC36 Polyclonal Antibody
Host Species	Rabbit
Clonality	Polyclonal
Purification	Caprylic Acid Ammonium Sulfate Precipitation purified
Applications	WB
Species Reactivity	Hu
Specificity	The antibody detects endogenous level of total Lys-63-specific deubiquitinase BRCC36 polyclonal antibody.
Immunogen Type	protein
Immunogen Description	Recombinant human Lys-63-specific deubiquitinase BRCC36 protein
Target Name	Lys-63-specific deubiquitinase BRCC36
Other Names	BRCA1-A complex subunit BRCC36 BRCA1/BRCA2-containing complex subunit 3 BRCA1/BRCA2-containing complex subunit 36 BRISC complex subunit BRCC36 BRCC3 BRCC36, C6.1A, CXorf53
Accession No.	Swiss-Prot#: P46736
Calculated MW	36kd
Formulation	Preservative: 0.03% Proclin 300 Constituents: 50% Glycerol, 0.01M PBS, PH 7.4
Storage	Store at -20°C

## Application Details

Western blotting: □1:500 - 1:1000

## Images



All lanes:Lys-63-specific deubiquitinase BRCC36 antibody at 2ug/ml+Hela whole cell lysate

Secondary  
Goat polyclonal to Rabbit IgG at 1/15000 dilution  
Predicted band size:36KDa  
Observed band size:36KDa

## Background

Metalloprotease that specifically cleaves 'Lys-63'-linked polyubiquitin chains. Does not have activity toward 'Lys-48'-linked polyubiquitin chains. Component of the BRCA1-A complex, a complex that specifically recognizes 'Lys-63'-linked ubiquitinated histones H2A and H2AX at DNA lesions sites, leading to target the BRCA1-BARD1 heterodimer to sites of DNA damage at double-strand breaks (DSBs). In the BRCA1-A complex, it

specifically removes 'Lys-63'-linked ubiquitin on histones H2A and H2AX, antagonizing the RNF8-dependent ubiquitination at double-strand breaks (DSBs). Catalytic subunit of the BRISC complex, a multiprotein complex that specifically cleaves 'Lys-63'-linked ubiquitin in various substrates. Mediates the specific 'Lys-63'-specific deubiquitination associated with the COP9 signalosome complex (CSN), via the interaction of the BRISC complex with the CSN complex.

## References

---

[1] Isolation and sequence of two genes associated with a CpG island 5' of the factor VIII gene. Kenrick S., Levinson B., Taylor S., Shapiro A., Gitschier J. Hum. Mol. Genet. 1:179-186(1992) [2] The chromosomal translocation t(X;14)(q28;q11) in T-cell pro-

---

Note: This product is for in vitro research use only and is not intended for use in humans or animals.