

LMOD1 Polyclonal Antibody

Catalog No: #42239

Package Size: #42239-1 50ul #42239-2 100ul

Orders: order@signalwayantibody.comSupport: tech@signalwayantibody.com

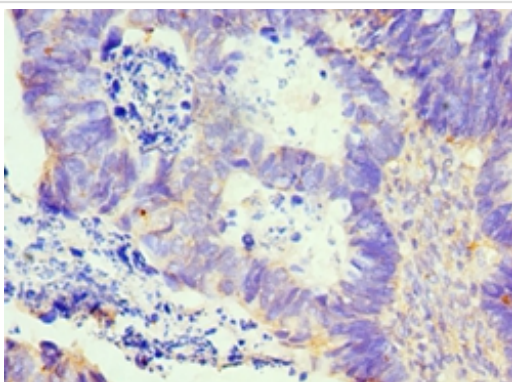
Description

Product Name	LMOD1 Polyclonal Antibody
Host Species	Rabbit
Clonality	Polyclonal
Purification	Antigen Affinity Purified
Applications	IHC
Species Reactivity	Hu
Specificity	The antibody detects endogenous level of total LMOD1 polyclonal antibody.
Immunogen Type	protein
Immunogen Description	Recombinant human Leiomodrin-1 protein(29-187aa)
Target Name	LMOD1
Other Names	Leiomodrin-1, 64 kDa autoantigen 1D, 64 kDa autoantigen 1D3, 64 kDa autoantigen D1, Leiomodrin, muscle form, Smooth muscle leiomodrin, SM-Lmod, Thyroid-associated ophthalmopathy autoantigen, LMOD1
Accession No.	Swiss-Prot#: P29536
Concentration	1.0mg/mL
Formulation	PBS with 0.02% sodium azide, 50% glycerol, pH7.3.
Storage	Store at -20°C

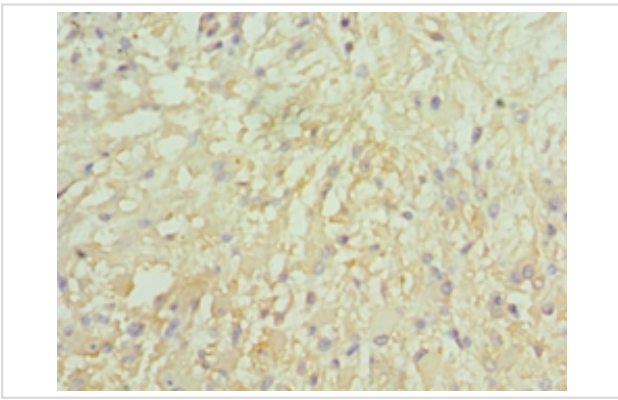
Application Details

Immunohistochemistry: 1:20 - 1:200

Images



Immunohistochemical analysis of paraffin-embedded human ovarian cancer using #42239 at dilution of 1:100.



Immunohistochemical analysis of paraffin-embedded human glioma using #42239 at dilution of 1:100.

References

[1]Leiomodins: larger members of the tropomodulin (Tmod) gene family."Conley C.A., Fritz-Six K.L., Almenar-Queralt A., Fowler V.M.Genomics 73:127-139(2001). [2]Leiomodin and tropomodulin in smooth muscle." Conley C.A.Am. J. Physiol. 280:C1645-C1656(2001). [3]Cloning and sequencing of a novel 64-kDa autoantigen recognized by patients with autoimmune thyroid disease." Dong Q., Ludgate M., Vassart G.J. Clin. Endocrinol. Metab. 72:1375-1381(1991).

Note: This product is for in vitro research use only and is not intended for use in humans or animals.