

Lysyl oxidase homolog 1 Polyclonal Antibody

Catalog No: #42241

Orders: order@signalwayantibody.comSupport: tech@signalwayantibody.com

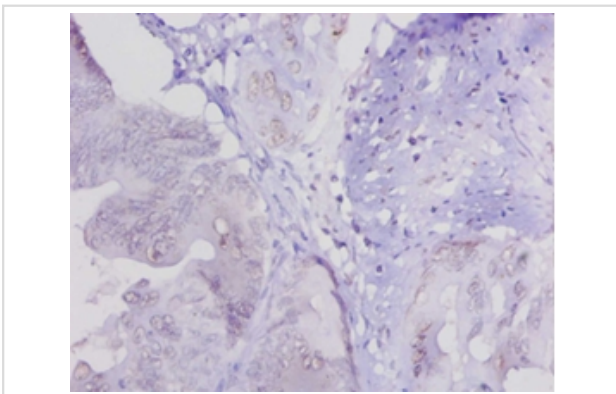
Description

| | |
|-----------------------|---|
| Product Name | Lysyl oxidase homolog 1 Polyclonal Antibody |
| Host Species | Rabbit |
| Clonality | Polyclonal |
| Purification | Caprylic Acid Ammonium Sulfate Precipitation purified |
| Applications | IHC |
| Species Reactivity | Hu |
| Specificity | The antibody detects endogenous level of total Lysyl oxidase homolog 1 polyclonal antibody. |
| Immunogen Type | protein |
| Immunogen Description | Recombinant human Lysyl oxidase homolog 1 protein |
| Target Name | Lysyl oxidase homolog 1 |
| Other Names | Lysyl oxidase-like protein 1, LOL, LOXL1, LOXL |
| Accession No. | Swiss-Prot#: P97873 |
| Formulation | Preservative: 0.03% Proclin 300 Constituents: 50% Glycerol, 0.01M PBS, PH 7.4 |
| Storage | Store at -20°C |

Application Details

Immunohistochemistry: 1:20 - 1:200

Images



Immunohistochemical analysis of paraffin-embedded human colon cancer using #42241 at dilution of 1:20.

Background

Active on elastin and collagen substrates.

References

[1]"Association of LOXL1 gene with Finnish exfoliation syndrome patients."Lemmela S., Forsman E., Onkamo P., Nurmi H., Laivuori H., Kivela T., Puska P., Heger M., Eriksson A., Forsius H., Jarvela I.J. Hum. Genet. 54:289-297(2009). [2]"A quantitative atla

Note: This product is for in vitro research use only and is not intended for use in humans or animals.