

LRP6 Polyclonal Antibody

Catalog No: #42243



Package Size: #42243-1 50ul #42243-2 100ul

Orders: order@signalwayantibody.comSupport: tech@signalwayantibody.com

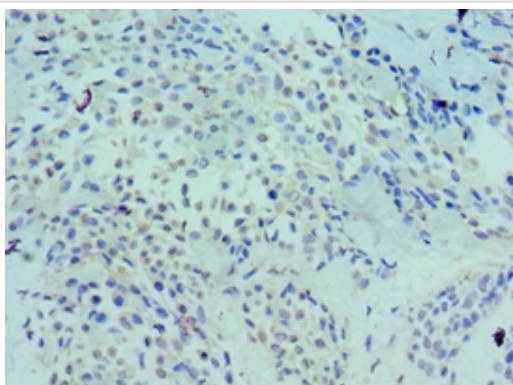
Description

Product Name	LRP6 Polyclonal Antibody
Host Species	Rabbit
Clonality	Polyclonal
Purification	Antigen Affinity Purified
Applications	IHC
Species Reactivity	Hu
Specificity	The antibody detects endogenous level of total LRP6 polyclonal antibody.
Immunogen Type	protein
Immunogen Description	Recombinant human Low-density lipoprotein receptor-related protein 6 protein (20-150aa)
Target Name	LRP6
Other Names	LRP-6, LRP6
Accession No.	Swiss-Prot#: O75581
Concentration	1.0mg/mL
Formulation	PBS with 0.02% sodium azide, 50% glycerol, pH7.3.
Storage	Store at -20°C

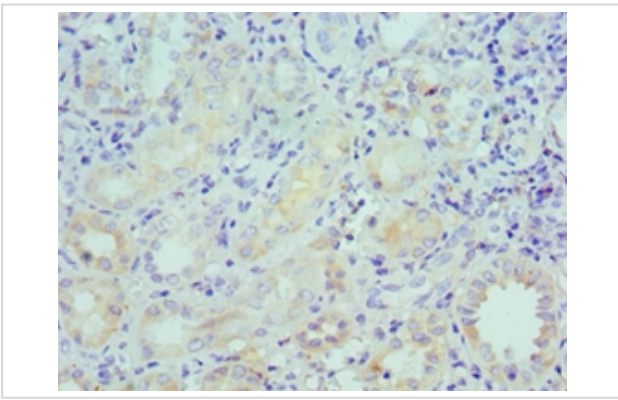
Application Details

Immunohistochemistry: 1:20 - 1:200

Images



Immunohistochemical analysis of paraffin-embedded human breast cancer using #42243 at dilution of 1:100.



Immunohistochemical analysis of paraffin-embedded human kidney using #42243 at dilution of 1:100.

Background

Component of the Wnt-Fzd-LRP5-LRP6 complex that triggers beta-catenin signaling through inducing aggregation of receptor-ligand complexes into ribosome-sized signalsomes. Cell-surface coreceptor of Wnt/beta-catenin signaling, which plays a pivotal role in bone formation. The Wnt-induced Fzd/LRP6 coreceptor complex recruits DVL1 polymers to the plasma membrane which, in turn, recruits the AXIN1/GSK3B-complex to the cell surface promoting the formation of signalsomes and inhibiting AXIN1/GSK3-mediated phosphorylation and destruction of beta-catenin. Required for posterior patterning of the epiblast during gastrulation (By similarity).

References

[1]"The status, quality, and expansion of the NIH full-length cDNA project: the Mammalian Gene Collection (MGC)."The MGC Project Team Genome Res. 14:2121-2127(2004). [2]"Head inducer Dickkopf-1 is a ligand for Wnt coreceptor LRP6." Semenov M.V., Tamai K., Brott B.K., Kuhl M., Sokol S., He X.Curr. Biol. 11:951-961(2001) . [3]"LDL-receptor-related protein 6 is a receptor for Dickkopf proteins." Mao B., Wu W., Li Y., Hoppe D., Stannek P., Glinka A., Niehrs C.Nature 411:321-325(2001)

Note: This product is for in vitro research use only and is not intended for use in humans or animals.