

## Lactadherin Polyclonal Antibody

Catalog No: #42497

Orders: [order@signalwayantibody.com](mailto:order@signalwayantibody.com)Support: [tech@signalwayantibody.com](mailto:tech@signalwayantibody.com)

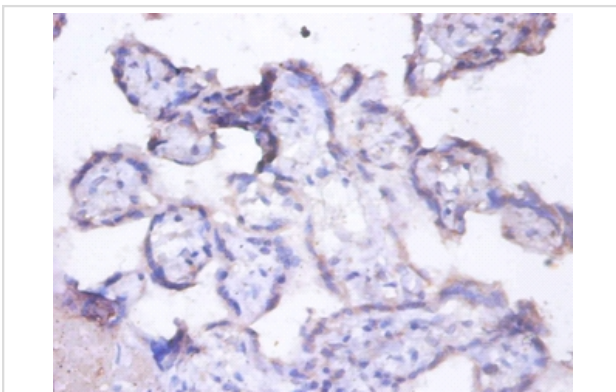
## Description

Product Name	Lactadherin Polyclonal Antibody
Host Species	Rabbit
Clonality	Polyclonal
Purification	Caprylic Acid Ammonium Sulfate Precipitation purified
Applications	IHC
Species Reactivity	Hu
Specificity	The antibody detects endogenous level of total Lactadherin polyclonal antibody.
Immunogen Type	protein
Immunogen Description	Recombinant human Lactadherin protein
Target Name	Lactadherin
Other Names	Breast epithelial antigen BA46 HMFG MFGM Milk fat globule-EGF factor 8 Short name=MFG-E8 SED1 Cleaved into the following 2 chains: Lactadherin short form Medin
Accession No.	Swiss-Prot#: Q08431
Formulation	Preservative: 0.03% Proclin 300 Constituents: 50% Glycerol, 0.01M PBS, PH 7.4
Storage	Store at -20°C

## Application Details

Immunohistochemistry: 1:20 - 1:200

## Images



Immunohistochemical analysis of paraffin-embedded human placenta using #42497 at dilution of 1:100.

## Background

Plays an important role in the maintenance of intestinal epithelial homeostasis and the promotion of mucosal healing. Promotes VEGF-dependent neovascularization By similarity. Contributes to phagocytic removal of apoptotic cells in many tissues. Specific ligand for the alpha-v/beta-3 and alpha-v/beta-5 receptors. Also binds to phosphatidylserine-enriched cell surfaces in a receptor-independent manner. Zona pellucida-binding protein which may play a role in gamete interaction. Binds specifically to rotavirus and inhibits its replication. Ref.15.Medin is the main constituent of aortic medial amyloid.

## References

---

[1]Cloning and sequence analysis of human breast epithelial antigen BA46 reveals an RGD cell adhesion sequence presented on an epidermal growth factor-like domain.Couto J.R., Taylor M.R., Godwin S.G., Ceriani R.L., Peterson J.A.DNA Cell Biol. 15:281-286(1)

---

Note: This product is for in vitro research use only and is not intended for use in humans or animals.