

Epidermal growth factor receptor Polyclonal Antibody

Catalog No: #42520

Orders: order@signalwayantibody.com

Support: tech@signalwayantibody.com

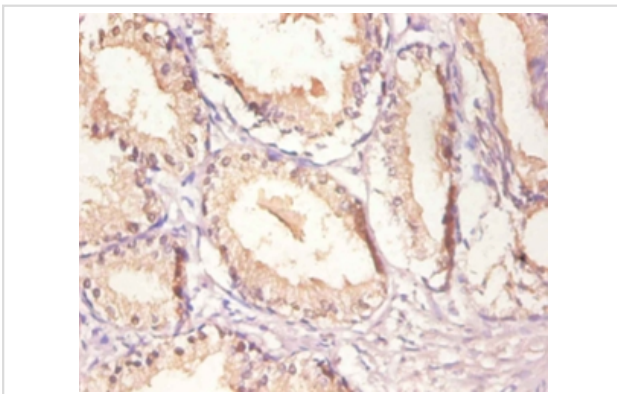
Description

Product Name	Epidermal growth factor receptor Polyclonal Antibody
Host Species	Rabbit
Clonality	Polyclonal
Purification	Caprylic Acid Ammonium Sulfate Precipitation purified
Applications	IHC
Species Reactivity	Hu
Specificity	The antibody detects endogenous level of total Epidermal growth factor receptor polyclonal antibody.
Immunogen Type	protein
Immunogen Description	Recombinant human Epidermal growth factor receptor protein
Target Name	Epidermal growth factor receptor
Other Names	Epidermal growth factor receptor 5, CLEC14A, C14orf27, EGFR5, UNQ236/PRO269
Accession No.	Swiss-Prot#: P00533
Formulation	Preservative: 0.03% Proclin 300 Constituents: 50% Glycerol, 0.01M PBS, PH 7.4
Storage	Store at -20°C

Application Details

Immunohistochemistry: 1:20 - 1:200

Images



Immunohistochemical analysis of paraffin-embedded human prostate using #42520 at dilution of 1:100.

Background

CLEC14A is a member of the C-type lectin domain (CTLD) family that contains one c-type lectin domain and one EGF-like domain.

References

- [1] "Cloning and characterization of a novel human ceg1 gene cDNA."Fu J.Q., Wang L., Chen W., Ci H.L., Li Y.P. Shi Yan Sheng Wu Xue Bao 37:409-417(2004) [2] "Full-length cDNA libraries and normalization."Li W.B., Gruber C., Jessee J., Polayes D. Submitted

Published Papers

el at., Renal Cell Carcinoma With Synchronous Ipsilateral Urothelial Carcinoma of the Renal Pelvis. In *Oncol Lett* on 2017 Jun by Qun Lu , Junlong Zhuang, et al.. PMID: 28588718, , (2017)

[PMID:28588718](#)

Note: This product is for in vitro research use only and is not intended for use in humans or animals.