

# Laminin subunit gamma-1 Polyclonal Antibody

Catalog No: #42540

Orders: [order@signalwayantibody.com](mailto:order@signalwayantibody.com)Support: [tech@signalwayantibody.com](mailto:tech@signalwayantibody.com)

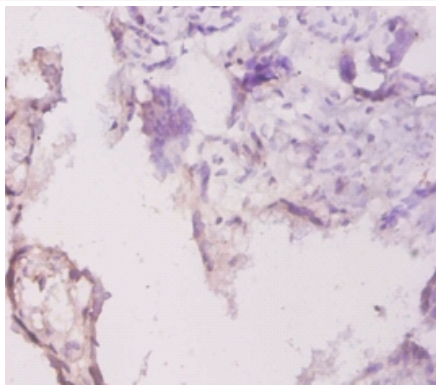
## Description

Product Name	Laminin subunit gamma-1 Polyclonal Antibody
Host Species	Rabbit
Clonality	Polyclonal
Purification	Caprylic Acid Ammonium Sulfate Precipitation purified
Applications	IHC
Species Reactivity	Hu
Specificity	The antibody detects endogenous level of total Laminin subunit gamma-1 polyclonal antibody.
Immunogen Type	protein
Immunogen Description	Recombinant human Laminin subunit gamma-1 protein
Target Name	Laminin subunit gamma-1
Other Names	Laminin B2 chain, Laminin-1 subunit gamma.Laminin-10 subunit gamma, Laminin-11 subunit gamma, LAMC1, LAMB2
Accession No.	Swiss-Prot#: P11047
Formulation	Preservative: 0.03% Proclin 300 Constituents: 50% Glycerol, 0.01M PBS, PH 7.4
Storage	Store at -20°C

## Application Details

Immunohistochemistry: 1:20 - 1:200

## Images



Immunohistochemical analysis of paraffin-embedded human placenta using #42540 at dilution of 1:20.

## Background

Binding to cells via a high affinity receptor, laminin is thought to mediate the attachment, migration and organization of cells into tissues during embryonic development by interacting with other extracellular matrix components.

## References

[1] Human laminin B2 chain. Comparison of the complete amino acid sequence with the B1 chain reveals variability in sequence homology between different structural domains. Pikkarainen T., Kallunki T., Tryggvason K.J. Biol. Chem. 263:6751-6758(1988) [2]St

---

Note: This product is for in vitro research use only and is not intended for use in humans or animals.