

# IdcC Polyclonal Antibody

Catalog No: #42603

Orders: [order@signalwayantibody.com](mailto:order@signalwayantibody.com)Support: [tech@signalwayantibody.com](mailto:tech@signalwayantibody.com)

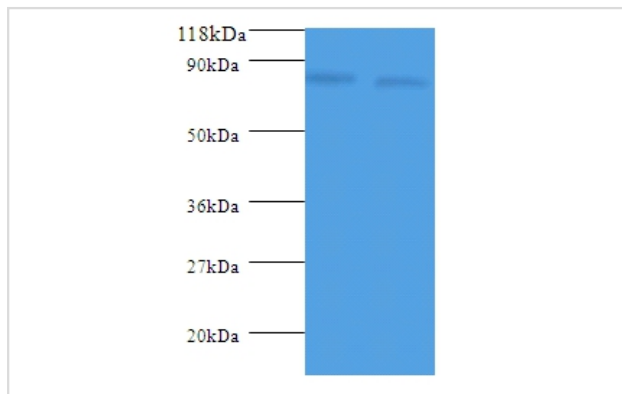
## Description

Product Name	IdcC Polyclonal Antibody
Host Species	Rabbit
Clonality	Polyclonal
Purification	Caprylic Acid Ammonium Sulfate Precipitation purified
Applications	WB
Species Reactivity	E.coli
Specificity	The antibody detects endogenous level of total IdcC polyclonal antibody.
Immunogen Type	protein
Immunogen Description	Recombinant Escherichia coli Lysine decarboxylase, constitutive protein
Target Name	IdcC
Other Names	IdcC, Idc, IdcH, b0186, JW0181
Accession No.	Swiss-Prot#: P52095
Calculated MW	80.5kd
Formulation	Preservative: 0.03% Proclin 300 Constituents: 50% Glycerol, 0.01M PBS, PH 7.4
Storage	Store at -20°C

## Application Details

Western blotting: □1:500 - 1:1000

## Images



All lanes : Lysine decarboxylase, constitutive antibody at 2ug/ml+DH5a whole cell lysate

Secondary

Goat polyclonal to Rabbit IgG at 1/10000 dilution

Predicted band size :80.5kDa

Observed band size:80.5kDa

## Background

LDC is constitutively but weakly expressed under various conditions.

## References

[1]"Characterization of a second lysine decarboxylase isolated from Escherichia coli."Kikuchi Y., Kojima H., Tanaka T., Takatsuka Y., Kamio Y.J.

Note: This product is for in vitro research use only and is not intended for use in humans or animals.