

VIL1 Antibody

Catalog No: #42831



Package Size: #42831-1 50ul #42831-2 100ul

Orders: order@signalwayantibody.com

Support: tech@signalwayantibody.com

Description

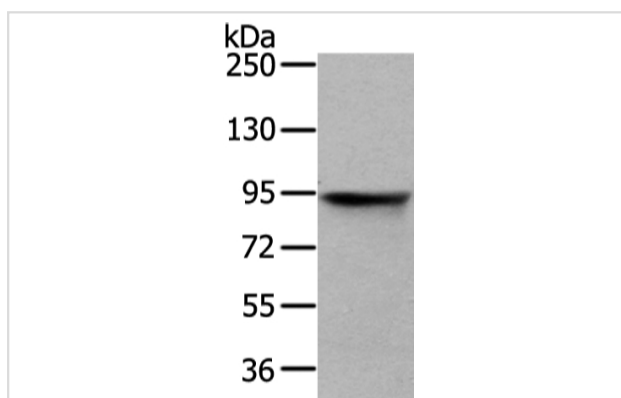
Product Name	VIL1 Antibody
Host Species	Rabbit
Clonality	Polyclonal
Purification	Antigen affinity purification.
Applications	WB IHC
Species Reactivity	Hu
Specificity	The antibody detects endogenous levels of total VIL1 protein.
Immunogen Type	protein
Immunogen Description	Full length fusion protein of human VIL1
Target Name	VIL1
Other Names	VIL; D2S1471
Accession No.	Swiss-Prot#: P09327Gene ID: 7429
Calculated MW	93kd
Concentration	2.133333333333333mg/ml
Formulation	Rabbit IgG in pH7.4 PBS, 0.05% NaN ₃ , 40% Glycerol.
Storage	Store at -20°C

Application Details

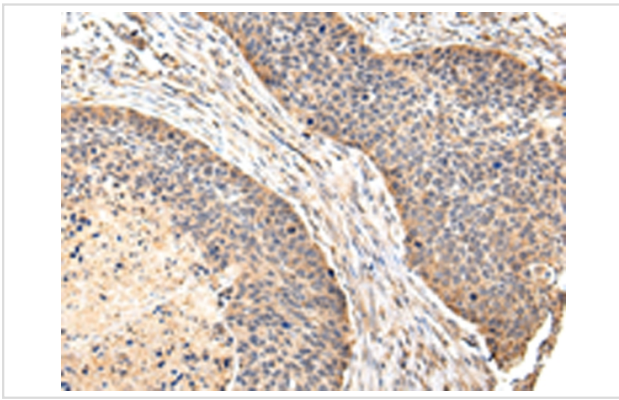
Western blotting: 1:200-1:1000

Immunohistochemistry: 1:25-1:100

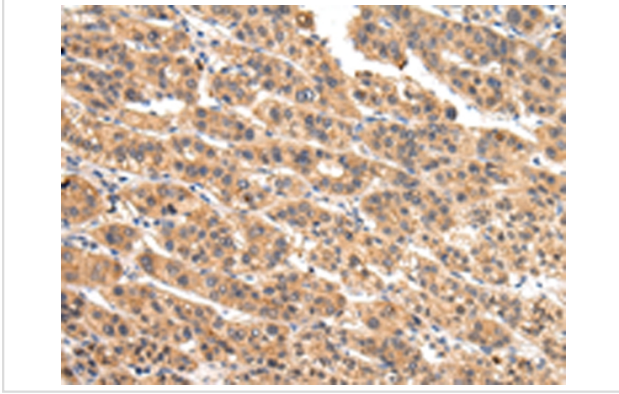
Images



Gel: 6%SDS-PAGE
 Lysate: 40 µg
 Lane: HT-29 cell
 Primary antibody: 1/250 dilution
 Secondary antibody: Goat anti rabbit IgG at 1/8000 dilution
 Exposure time: 3 seconds



Immunohistochemical analysis of paraffin-embedded Human esophagus cancer tissue using #42831 at dilution 1/30.



Immunohistochemical analysis of paraffin-embedded Human liver cancer tissue using #42831 at dilution 1/30.

Background

This gene encodes a member of a family of calcium-regulated actin-binding proteins. This protein represents a dominant part of the brush border cytoskeleton which functions in the capping, severing, and bundling of actin filaments. Two mRNAs of 2.7 kb and 3.5 kb have been observed; they result from utilization of alternate poly-adenylation signals present in the terminal exon.

Note: This product is for in vitro research use only and is not intended for use in humans or animals.