

VPS28 Antibody

Catalog No: #42836

Package Size: #42836-1 50ul #42836-2 100ul

Orders: order@signalwayantibody.comSupport: tech@signalwayantibody.com

Description

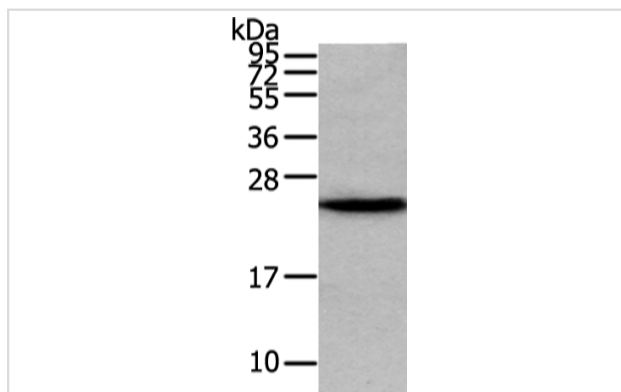
Product Name	VPS28 Antibody
Host Species	Rabbit
Clonality	Polyclonal
Purification	Antigen affinity purification.
Applications	WB IHC
Species Reactivity	Hu
Specificity	The antibody detects endogenous levels of total VPS28 protein.
Immunogen Type	protein
Immunogen Description	Full length fusion protein of human VPS28
Target Name	VPS28
Other Names	ESCRT-I complex subunit VPS28; H-Vps28; MGC60323; vacuolar protein sorting 28 homolog (S. cerevisiae); Vacuolar protein sorting-associated protein 28 homolog
Accession No.	Swiss-Prot#: Q9UK41 Gene ID: 51160
Calculated MW	25kd
Concentration	0.7mg/ml
Formulation	Rabbit IgG in pH7.4 PBS, 0.05% NaN ₃ , 40% Glycerol.
Storage	Store at -20°C

Application Details

Western blotting: 1:200-1:1000

Immunohistochemistry: 1:100-1:200

Images



Gel: 12%SDS-PAGE

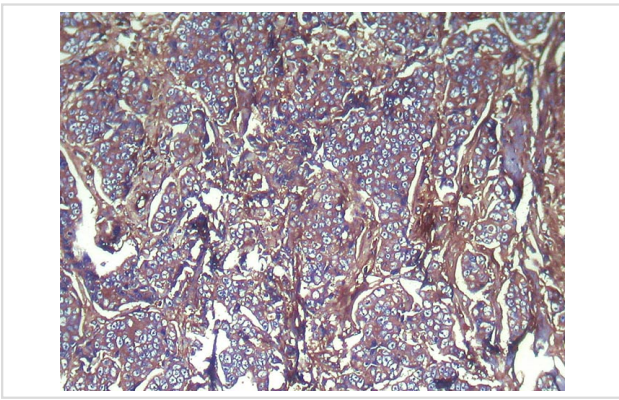
Lysate: 40 µg

Lane: Human fetal liver tissue

Primary antibody: 1/200 dilution

Secondary antibody: Goat anti rabbit IgG at 1/8000 dilution

Exposure time: 5 seconds



Immunohistochemical analysis of paraffin-embedded Human Breast cancer tissue using #42836 at dilution 1/100.

Background

This gene encodes a protein subunit of the ESCRT-I complex (endosomal complexes required for transport), which functions in the transport and sorting of proteins into subcellular vesicles. This complex can also be hijacked to facilitate the budding of enveloped viruses from the cell membrane. Alternative splicing results in multiple transcript variants encoding different isoforms.

Note: This product is for in vitro research use only and is not intended for use in humans or animals.