

## VPS35 Antibody

Catalog No: #42841



Package Size: #42841-1 50ul #42841-2 100ul

Orders: [order@signalwayantibody.com](mailto:order@signalwayantibody.com)Support: [tech@signalwayantibody.com](mailto:tech@signalwayantibody.com)

## Description

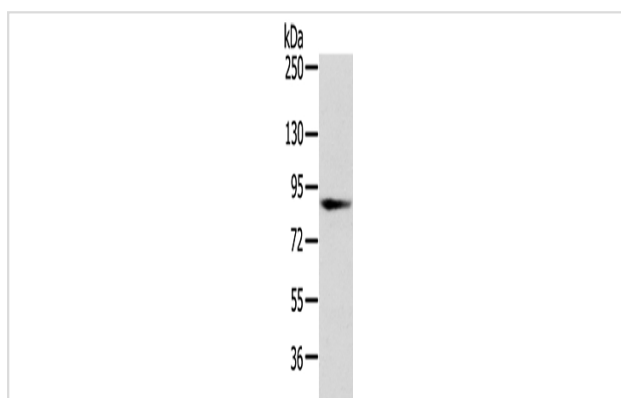
Product Name	VPS35 Antibody
Host Species	Rabbit
Clonality	Polyclonal
Purification	Antigen affinity purification.
Applications	WB IHC
Species Reactivity	Hu
Specificity	The antibody detects endogenous levels of total VPS35 protein.
Immunogen Type	protein
Immunogen Description	Fusion protein of human VPS35
Target Name	VPS35
Other Names	MEM3; PARK17
Accession No.	Swiss-Prot#: Q96QK1 Gene ID: 55737
Calculated MW	92kd
Concentration	6.4mg/ml
Formulation	Rabbit IgG in pH7.4 PBS, 0.05% NaN <sub>3</sub> , 40% Glycerol.
Storage	Store at -20°C

## Application Details

Western blotting: 1:200-1:1000

Immunohistochemistry: 1:45-1:300

## Images



Gel: 6%SDS-PAGE

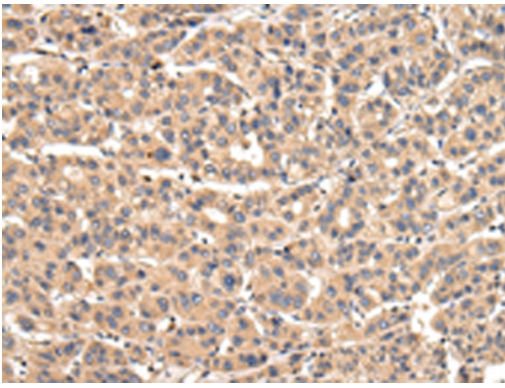
Lysate: 40 µg

Lane: Human fetal brain tissue

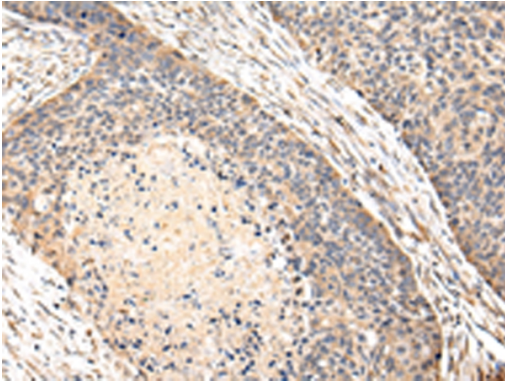
Primary antibody: 1/250 dilution

Secondary antibody: Goat anti rabbit IgG at 1/8000 dilution

Exposure time: 20 seconds



Immunohistochemical analysis of paraffin-embedded Human liver cancer tissue using #42841 at dilution 1/30.



Immunohistochemical analysis of paraffin-embedded Human esophagus cancer tissue using #42841 at dilution 1/30.

## Background

This gene belongs to a group of vacuolar protein sorting (VPS) genes. The encoded protein is a component of a large multimeric complex, termed the retromer complex, involved in retrograde transport of proteins from endosomes to the trans-Golgi network. The close structural similarity between the yeast and human proteins that make up this complex suggests a similarity in function. Expression studies in yeast and mammalian cells indicate that this protein interacts directly with VPS35, which serves as the core of the retromer complex.?

Note: This product is for in vitro research use only and is not intended for use in humans or animals.