

## WDR41 Antibody

Catalog No: #42848



Package Size: #42848-1 50ul #42848-2 100ul

Orders: [order@signalwayantibody.com](mailto:order@signalwayantibody.com)Support: [tech@signalwayantibody.com](mailto:tech@signalwayantibody.com)

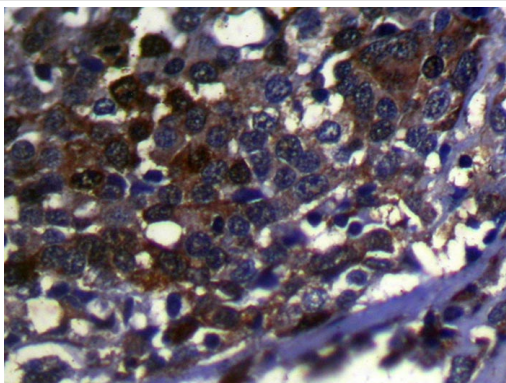
## Description

|                       |                                                                 |
|-----------------------|-----------------------------------------------------------------|
| Product Name          | WDR41 Antibody                                                  |
| Host Species          | Rabbit                                                          |
| Clonality             | Polyclonal                                                      |
| Purification          | Antigen affinity purification.                                  |
| Applications          | IHC                                                             |
| Species Reactivity    | Hu                                                              |
| Specificity           | The antibody detects endogenous levels of total WDR41 protein.  |
| Immunogen Type        | protein                                                         |
| Immunogen Description | Fusion protein of human WDR41                                   |
| Target Name           | WDR41                                                           |
| Other Names           | MSTP048                                                         |
| Accession No.         | Swiss-Prot#: Q9HAD4 Gene ID: 55255                              |
| Concentration         | 0.7mg/ml                                                        |
| Formulation           | Rabbit IgG in pH7.4 PBS, 0.05% NaN <sub>3</sub> , 40% Glycerol. |
| Storage               | Store at -20°C                                                  |

## Application Details

Immunohistochemistry: 1:100-1:200

## Images



Immunohistochemical analysis of paraffin-embedded Human Liver cancer tissue using #42848 at dilution 1/100.

## Background

WD-repeats are motifs that are found in a variety of proteins and are characterized by a conserved core of 40-60 amino acids, which commonly form a tertiary propeller structure. While proteins that contain WD-repeats participate in a wide range of cellular functions, they are generally involved in regulatory mechanisms involving signal transduction, apoptosis, transcriptional regulation, cell cycle control. WD repeats serve as sites for protein-protein interaction and some seem to mediate the assembly of protein complexes. WDR41 (WD repeat-containing protein 41) is a 459 amino

acid protein that contains six WD repeats. WDR41 is encoded by a gene located on human chromosome 5q13.3.

---

Note: This product is for in vitro research use only and is not intended for use in humans or animals.