

Annexin A1 antibody

Catalog No: #22818



Orders: order@signalwayantibody.com

Support: tech@signalwayantibody.com

Description

Product Name	Annexin A1 antibody
Host Species	Rabbit
Clonality	Polyclonal
Purification	Purified by antigen-affinity chromatography.
Applications	WB IHC IF
Species Reactivity	Hu
Immunogen Type	Recombinant protein
Immunogen Description	Recombinant protein fragment contain a sequence corresponding to a region within amino acids 1 and 198 of Annexin A1
Target Name	Annexin A1
Accession No.	NCBI Gene ID: 301NCBI mRNA#: BC001275NCBI Protein#: AAH01275
Concentration	1mg/ml
Formulation	Supplied in 0.1M Tris-buffered saline with 10% Glycerol (pH7.0). 0.01% Thimerosal was added as a preservative.
Storage	Store at -20°C for long term preservation (recommended). Store at 4°C for short term use.

Application Details

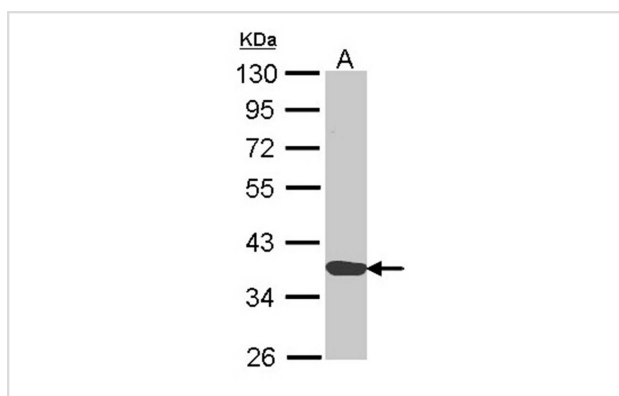
Predicted MW: 39kd

Western blotting: 1:500-1:3000

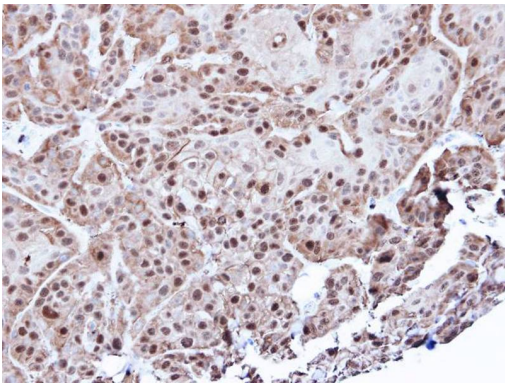
Immunohistochemistry: 1:100-1:500

Immunofluorescence: 1:100-1:200

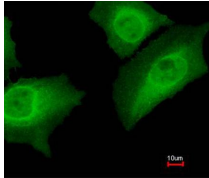
Images



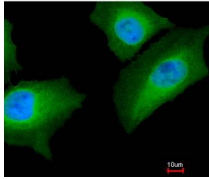
Sample (30 ug of whole cell lysate)
 A: H1299
 10% SDS PAGE
 Primary antibody diluted at 1: 1000



Immunohistochemical analysis of paraffin-embedded Cal27 xenograft, using Annexin A1 antibody at 1: 500 dilution.



Merged with DNA probe



Immunofluorescence analysis of paraformaldehyde-fixed HeLa, using Annexin A1 antibody at 1: 200 dilution.

Background

Annexin I belongs to a family of Ca(2+)-dependent phospholipid binding proteins which have a molecular weight of approximately 35,000 to 40,000 and are preferentially located on the cytosolic face of the plasma membrane. Annexin I protein has an apparent relative molecular mass of 40 kDa, with phospholipase A2 inhibitory activity. Since phospholipase A2 is required for the biosynthesis of the potent mediators of inflammation, prostaglandins and leukotrienes, annexin I may have potential anti-inflammatory activity. [provided by RefSeq]

Note: This product is for in vitro research use only and is not intended for use in humans or animals.