

## ZNF672 Antibody

Catalog No: #42982

Package Size: #42982-1 50ul #42982-2 100ul

Orders: order@signalwayantibody.com

Support: tech@signalwayantibody.com

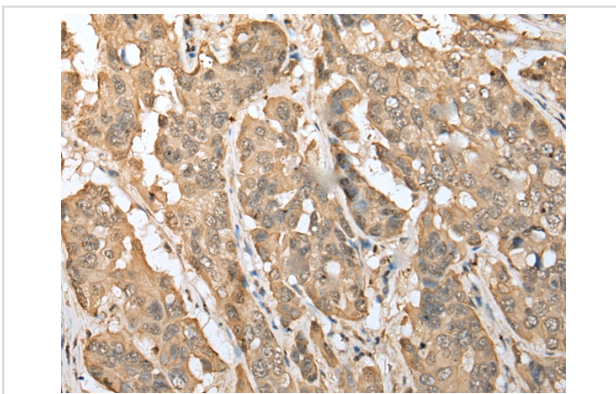
## Description

Product Name	ZNF672 Antibody
Host Species	Rabbit
Clonality	Polyclonal
Purification	Antigen affinity purification.
Applications	IHC
Species Reactivity	Hu
Specificity	The antibody detects endogenous levels of total ZNF672 protein.
Immunogen Type	protein
Immunogen Description	Full length fusion protein of human ZNF672
Target Name	ZNF672
Other Names	FLJ22301; Zinc finger protein 672; ZN672
Accession No.	Swiss-Prot#: Q499Z4 Gene ID: 79894
Concentration	1.3mg/ml
Formulation	Rabbit IgG in pH7.4 PBS, 0.05% NaN <sub>3</sub> , 40% Glycerol.
Storage	Store at -20°C

## Application Details

Immunohistochemistry: 1:25-1:100

## Images



Immunohistochemical analysis of paraffin-embedded Human breast cancer tissue using #42982 at dilution 1/30,

## Background

ZNF672 (zinc finger protein 672) is a 452 amino acid nuclear protein that may be involved in transcriptional regulation. Belonging to the KrB<sup>1</sup>B<sup>1</sup>H<sup>1</sup>pel C2H2-type zinc-finger protein family, ZNF672 contains 14 C2H2-type zinc fingers. ZNF672 exists as two alternatively spliced isoforms, and is encoded by a gene that maps to human chromosome 1q44. Human chromosome 1 spans 260 million base pairs, contains over 3,000 genes, comprises nearly 8% of the human genome, and houses a large number of disease-associated genes, including those that are involved in familial adenomatous

polyposis, Stickler syndrome, ParkinsonB'B—s disease, Gaucher disease, schizophrenia and Usher syndrome.

---

Note: This product is for in vitro research use only and is not intended for use in humans or animals.