

MRPS30 Antibody

Catalog No: #43042



Package Size: #43042-1 50ul #43042-2 100ul

Orders: order@signalwayantibody.comSupport: tech@signalwayantibody.com

Description

Product Name	MRPS30 Antibody
Host Species	Rabbit
Clonality	Polyclonal
Purification	Antigen affinity purification.
Applications	WB;IF/IC;IP
Species Reactivity	Hu, Ms, Rt
Specificity	The antibody detects endogenous levels of total MRPS30 protein.
Immunogen Description	Recombinant full length protein of human MRPS30.
Target Name	MRPS30
Other Names	PAP; PDCD9; S30mt; MRP-S30
Accession No.	Swiss-Prot#: Q9NP92Gene ID: 10884
Calculated MW	50kd
Concentration	1mg/ml
Formulation	Liquid in 0.42% Potassium phosphate, 0.87% Sodium chloride, pH 7.3, 30% glycerol, and 0.01% sodium azide.
Storage	Shipped at 4°C. Upon delivery aliquot and store at -20°C for one year. Avoid freeze/thaw cycles.

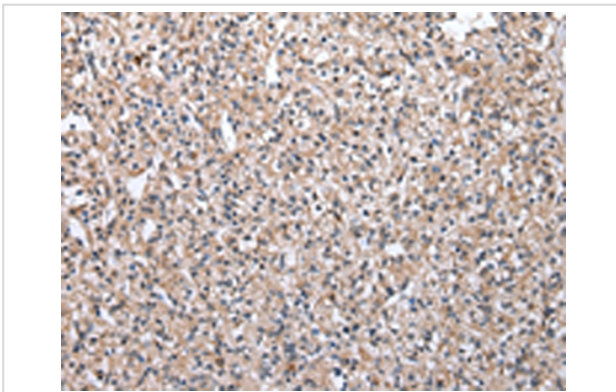
Application Details

WB 1:500 - 1:1000

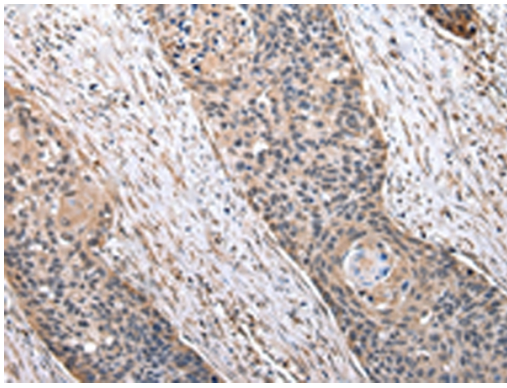
IF/IC 1:50 - 1:200

IP 1:10 - 1:50

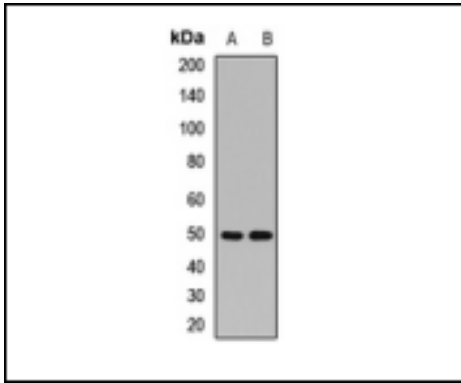
Images



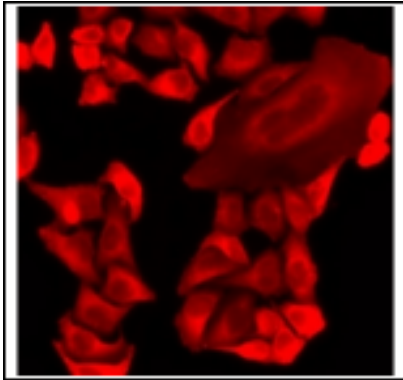
Immunohistochemical analysis of paraffin-embedded Human prostate cancer tissue using #43042 at dilution 1/20.



Immunohistochemical analysis of paraffin-embedded Human esophagus cancer tissue using #43042 at dilution 1/20.



Western blot analysis of MRPS30 expression in HeLa (A), HepG2 (B) whole cell lysates.



Immunofluorescent analysis of MRPS30 staining in HeLa cells. Formalin-fixed cells were permeabilized with 0.1% Triton X-100 in TBS for 5-10 minutes and blocked with 3% BSA-PBS for 30 minutes at room temperature. Cells were probed with the primary antibody in 3% BSA-PBS and incubated overnight at 4 °C in a humidified chamber. Cells were washed with PBST and incubated with a DyLight 594-conjugated secondary antibody (red) in PBS at room temperature in the dark.

Background

Mammalian mitochondrial ribosomal proteins are encoded by nuclear genes and help in protein synthesis within the mitochondrion. Mitochondrial ribosomes (mitoribosomes) consist of a small 28S subunit and a large 39S subunit. They have an estimated 75% protein to rRNA composition compared to prokaryotic ribosomes, where this ratio is reversed. Another difference between mammalian mitoribosomes and prokaryotic ribosomes is that the latter contain a 5S rRNA.

Note: This product is for in vitro research use only and is not intended for use in humans or animals.