

PINK1 Antibody

Catalog No: #43104

Package Size: #43104-1 50ul #43104-2 100ul

Orders: order@signalwayantibody.com

Support: tech@signalwayantibody.com

Description

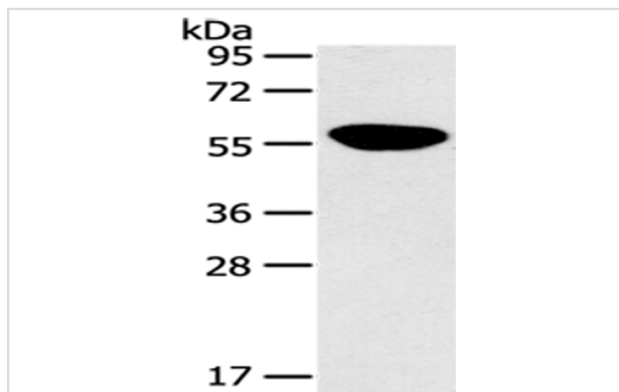
Product Name	PINK1 Antibody
Host Species	Rabbit
Clonality	Polyclonal
Purification	Antigen affinity purification.
Applications	WB IHC
Species Reactivity	Hu Ms
Specificity	The antibody detects endogenous levels of total PINK1 protein.
Immunogen Description	Synthetic peptide of human PINK1
Target Name	PINK1
Other Names	BRPK; PARK6
Accession No.	Swiss-Prot#: Q9BXM7 Gene ID: 65018
Calculated MW	63kd
Concentration	1mg/ml
Formulation	Rabbit IgG in pH7.4 PBS, 0.05% NaN ₃ , 40% Glycerol.
Storage	Store at -20°C

Application Details

Western blotting: 1:500-1:2000

Immunohistochemistry: 1:25-1:100

Images



Gel: 10%SDS-PAGE

Lysate: 40 µg

Lane: Human fetal brain tissue

Primary antibody: 1/125 dilution

Secondary antibody: Goat anti rabbit IgG at 1/8000 dilution

Exposure time: 10 seconds

Background

This gene encodes a serine/threonine protein kinase that localizes to mitochondria. It is thought to protect cells from stress-induced mitochondrial dysfunction. Mutations in this gene cause one form of autosomal recessive early-onset Parkinson disease.

Published Papers

Li et al., Mitochondrial damage-induced abnormal glucose metabolism with ageing in the hippocampus of APP/PS1 mice. *Metabolomics* 2023 Jun 8;19(6):100000. doi:10.1007/s12220-023-00000-0. PMID:37289288, (2023)

PMID:37289288

Note: This product is for in vitro research use only and is not intended for use in humans or animals.