

## RPA 70 kDa subunit antibody

Catalog No: #22833



Orders: order@signalwayantibody.com

Support: tech@signalwayantibody.com

## Description

Product Name	RPA 70 kDa subunit antibody
Host Species	Rabbit
Clonality	Polyclonal
Purification	Purified by antigen-affinity chromatography.
Applications	WB IHC IF
Species Reactivity	Hu
Immunogen Type	Recombinant protein
Immunogen Description	Recombinant protein fragment contain a sequence corresponding to a region within amino acids 369 and 616 of RPA 70 kDa subunit
Target Name	RPA 70 kDa subunit
Accession No.	NCBI Gene ID: 6117NCBI mRNA#: NM_002945NCBI Protein#: NP_002936
Concentration	0.4mg/ml
Formulation	Supplied in 0.1M Tris-buffered saline with 10% Glycerol (pH7.0). 0.01% Thimerosal was added as a preservative.
Storage	Store at -20°C for long term preservation (recommended). Store at 4°C for short term use.

## Application Details

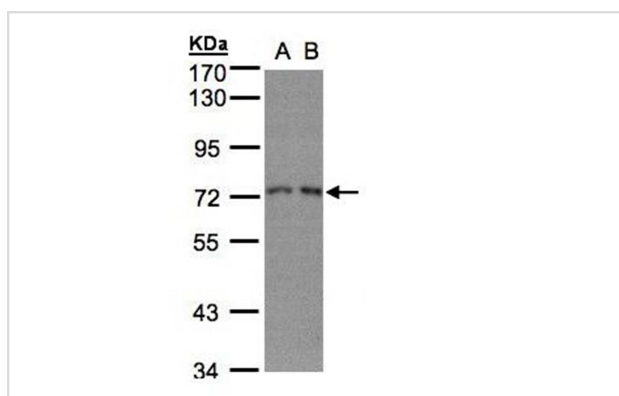
Predicted MW: 68kd

Western blotting: 1:500-1:3000

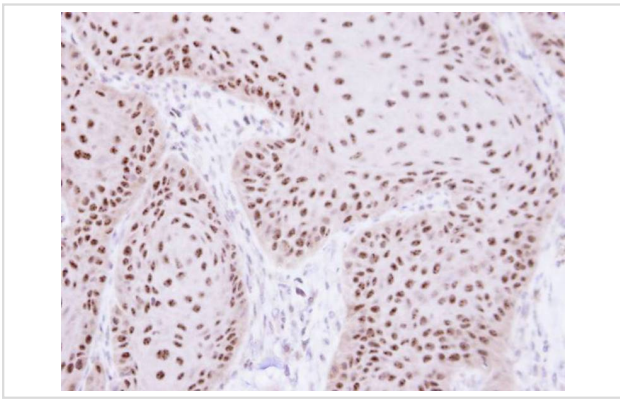
Immunohistochemistry: 1:100-1:250

Immunofluorescence: 1:100-1:200

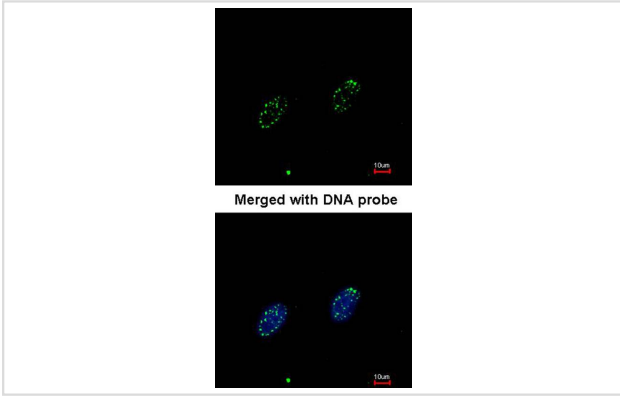
## Images



Sample(30 ug whole cell lysate)  
 A: H1299  
 B: HeLa S3  
 7.5% SDS PAGE  
 Primary antibody diluted at 1: 1000



Immunohistochemical analysis of paraffin-embedded Cal27 xenograft, using RPA 70 kDa subunit antibody at 1: 100 dilution.



Immunofluorescence analysis of paraformaldehyde-fixed HeLa, using RPA 70 kDa subunit antibody at 1: 200 dilution.

---

Note: This product is for in vitro research use only and is not intended for use in humans or animals.