

## NCOR2 Antibody

Catalog No: #43109



Package Size: #43109-1 50ul #43109-2 100ul

Orders: order@signalwayantibody.com

Support: tech@signalwayantibody.com

## Description

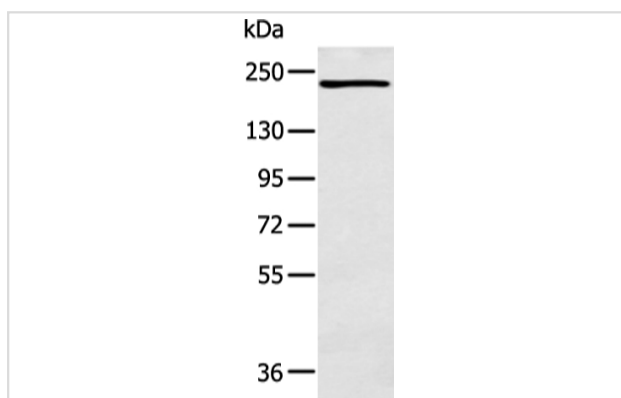
Product Name	NCOR2 Antibody
Host Species	Rabbit
Clonality	Polyclonal
Purification	Antigen affinity purification.
Applications	WB IHC
Species Reactivity	Hu
Specificity	The antibody detects endogenous levels of total NCOR2 protein.
Immunogen Type	peptide
Immunogen Description	Synthetic peptide of human NCOR2
Target Name	NCOR2
Other Names	SMRT; TRAC; CTG26; SMRTE; TRAC1; N-CoR2; TNRC14; TRAC-1; SMAP270; SMRTE-tau
Accession No.	Swiss-Prot#: Q9Y618Gene ID: 9612
Calculated MW	275kd
Concentration	2.1mg/ml
Formulation	Rabbit IgG in pH7.4 PBS, 0.05% NaN <sub>3</sub> , 40% Glycerol.
Storage	Store at -20°C

## Application Details

Western blotting: 1:200-1:1000

Immunohistochemistry: 1:25-1:100

## Images



Gel: 6%SDS-PAGE

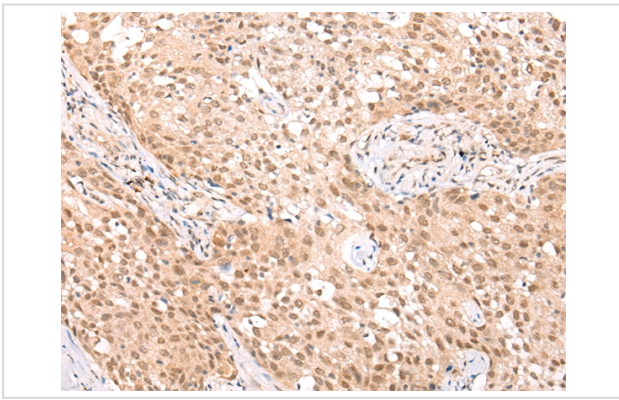
Lysate: 40 µg

Lane: K562 cell

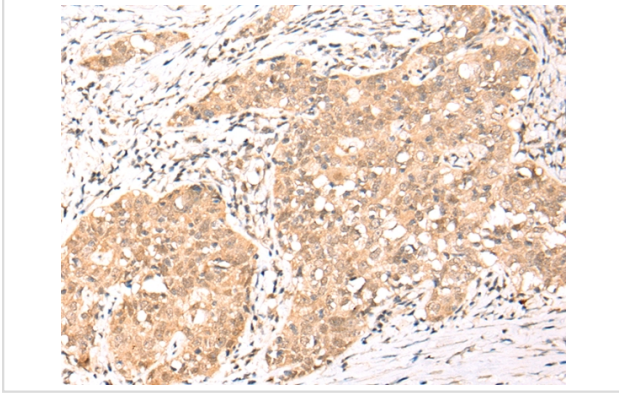
Primary antibody: 1/350 dilution

Secondary antibody: Goat anti rabbit IgG at 1/8000 dilution

Exposure time: 1 minute



Immunohistochemical analysis of paraffin-embedded Human lung cancer tissue using #43109 at dilution 1/35.



Immunohistochemical analysis of paraffin-embedded Human esophagus cancer tissue using #43109 at dilution 1/35.

## Background

This gene encodes a nuclear receptor co-repressor that mediates transcriptional silencing of certain target genes. The encoded protein is a member of a family of thyroid hormone- and retinoic acid receptor-associated co-repressors. This protein acts as part of a multisubunit complex which includes histone deacetylases to modify chromatin structure that prevents basal transcriptional activity of target genes.?

## Published Papers

el et al., Genetic Alterations in Papillary Thyroid Carcinoma With Hashimoto's Thyroiditis ANK3, an Indolent Maintainer of Papillary Thyroid Carcinoma. In Front Oncol

on 2022 May 12 by Chao Zeng, Jiali Long, et al.. PMID:35646694, (2022)

PMID:35646694

Note: This product is for in vitro research use only and is not intended for use in humans or animals.