

ADAMTS13 Antibody

Catalog No: #43116



Package Size: #43116-1 50ul #43116-2 100ul

Orders: order@signalwayantibody.com

Support: tech@signalwayantibody.com

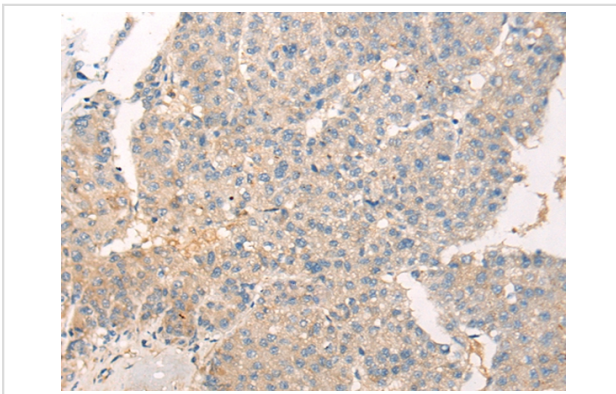
Description

| | |
|-----------------------|---|
| Product Name | ADAMTS13 Antibody |
| Host Species | Rabbit |
| Clonality | Polyclonal |
| Purification | Antigen affinity purification. |
| Applications | IHC |
| Species Reactivity | Hu |
| Immunogen Description | Synthetic peptide of human ADAMTS13 |
| Target Name | ADAMTS13 |
| Other Names | VWF _{CP} ; C9orf8; vWF-CP; ADAM-TS13; ADAMTS-13 |
| Accession No. | Swiss-Prot#: Q76LX8 Gene ID: 11093 |
| Concentration | 0.5mg/ml |
| Formulation | Rabbit IgG in pH7.4 PBS, 0.05% NaN ₃ , 40% Glycerol. |
| Storage | Store at -20°C |

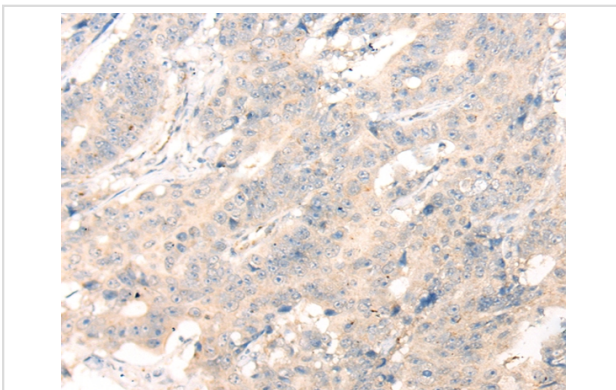
Application Details

Immunohistochemistry: 1:25-1:100

Images



Immunohistochemical analysis of paraffin-embedded Human liver cancer tissue using #43116 at dilution 1/20.



Immunohistochemical analysis of paraffin-embedded Human colorectal cancer tissue using #43116 at dilution 1/20.

Background

This gene encodes a member of a family of proteins containing several distinct regions, including a metalloproteinase domain, a disintegrin-like domain, and a thrombospondin type 1 (TS) motif. The enzyme encoded by this gene specifically cleaves von Willebrand Factor (vWF). Defects in this gene are associated with thrombotic thrombocytopenic purpura. Alternative splicing results in multiple transcript variants.

Note: This product is for in vitro research use only and is not intended for use in humans or animals.