

VPS35 antibody

Catalog No: #22838



Orders: order@signalwayantibody.com

Support: tech@signalwayantibody.com

Description

Product Name	VPS35 antibody
Host Species	Rabbit
Clonality	Polyclonal
Purification	Purified by antigen-affinity chromatography.
Applications	WB IF
Species Reactivity	Hu
Immunogen Type	Peptide
Immunogen Description	Synthetic peptide contain a sequence corresponding to a region within amino acids 733 and 796 of Human VPS35
Target Name	VPS35
Accession No.	NCBI Gene ID: 55737NCBI mRNA#: NM_018206NCBI Protein#: NP_060676
Concentration	1mg/ml
Formulation	Supplied in 0.1M Tris-buffered saline with 10% Glycerol (pH7.0). 0.01% Thimerosal was added as a preservative.
Storage	Store at -20°C for long term preservation (recommended). Store at 4°C for short term use.

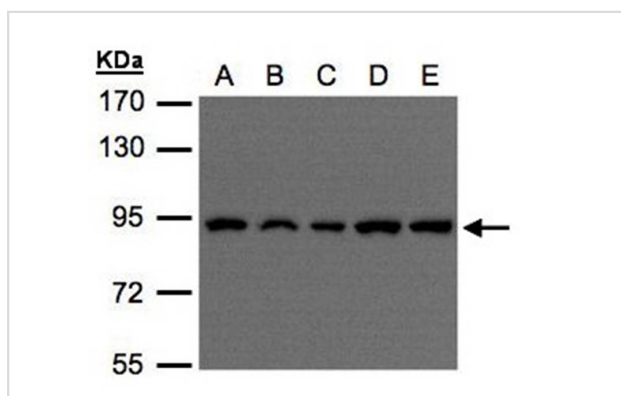
Application Details

Predicted MW: 92kd

Western blotting: 1:500-1:3000

Immunofluorescence: 1:100-1:200

Images



Sample(30 ug of whole cell lysate)

A: H1299

B: HeLa S3

C: Hep G2

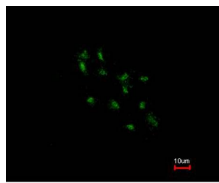
D: MOLT4

E: Raji

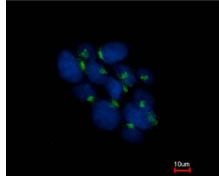
7.5% SDS PAGE

Primary antibody diluted at 1: 500

Immunofluorescence analysis of methanol-fixed HCT116, using VPS35 antibody at 1: 500 dilution.



Costained with Hoechst 33342



Background

This gene belongs to a group of vacuolar protein sorting (VPS) genes. The encoded protein is a component of a large multimeric complex, termed the retromer complex, involved in retrograde transport of proteins from endosomes to the trans-Golgi network. The close structural similarity between the yeast and human proteins that make up this complex suggests a similarity in function. Expression studies in yeast and mammalian cells indicate that this protein interacts directly with VPS35, which serves as the core of the retromer complex. [provided by RefSeq]

Note: This product is for in vitro research use only and is not intended for use in humans or animals.