

## ZBTB2 Antibody

Catalog No: #43204

Package Size: #43204-1 50ul #43204-2 100ul

Orders: [order@signalwayantibody.com](mailto:order@signalwayantibody.com)Support: [tech@signalwayantibody.com](mailto:tech@signalwayantibody.com)

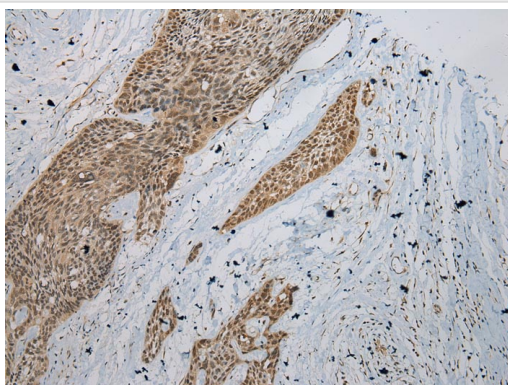
## Description

Product Name	ZBTB2 Antibody
Host Species	Rabbit
Clonality	Polyclonal
Purification	Antigen affinity purification.
Applications	IHC
Species Reactivity	Hu
Specificity	The antibody detects endogenous levels of total ZBTB2 protein.
Immunogen Type	peptide
Immunogen Description	Synthetic peptide of human ZBTB2
Target Name	ZBTB2
Other Names	ZNF437
Accession No.	Swiss-Prot#: Q8N680Gene ID: 57621
Concentration	1.6mg/ml
Formulation	Rabbit IgG in pH7.4 PBS, 0.05% NaN <sub>3</sub> , 40% Glycerol.
Storage	Store at -20°C

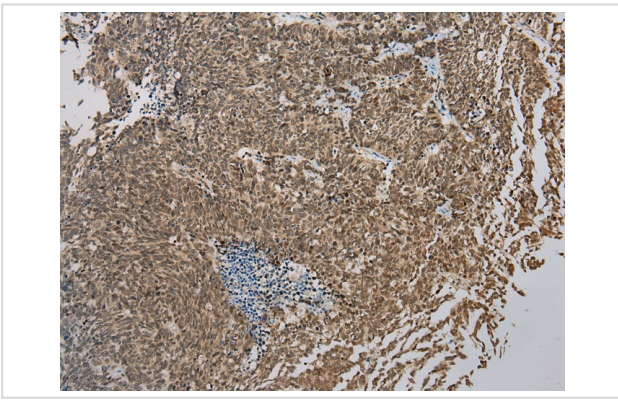
## Application Details

Immunohistochemistry: 1:100-1:200

## Images



Immunohistochemical analysis of paraffin-embedded Human Esophagus cancer tissue using #43204 at dilution 1/200.



Immunohistochemical analysis of paraffin-embedded Human Lung cancer tissue using #43204 at dilution 1/200.

## Background

ZBTB2 is a 514 amino acid nuclear protein that contains one BTB (POZ) domain and 4 C2H2-type zinc fingers. ZBTB25, also known as ZNF46 or KUP, is a 435 amino acid nuclear protein that is expressed mainly in hematopoietic cells and testis and contains one BTB (POZ) domain and 2 C2H2-type zinc fingers.

Note: This product is for in vitro research use only and is not intended for use in humans or animals.