

ZFAND2A Antibody

Catalog No: #43205

Package Size: #43205-1 50ul #43205-2 100ul

Orders: order@signalwayantibody.com

Support: tech@signalwayantibody.com

Description

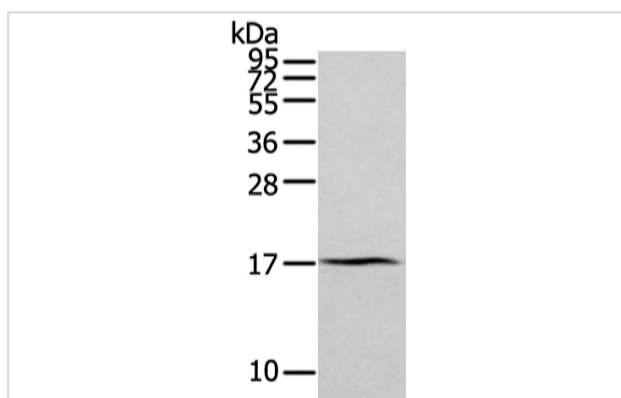
Product Name	ZFAND2A Antibody
Host Species	Rabbit
Clonality	Polyclonal
Purification	Antigen affinity purification.
Applications	WB IHC
Species Reactivity	Hu
Specificity	The antibody detects endogenous levels of total ZFAND2A protein.
Immunogen Type	peptide
Immunogen Description	Synthetic peptide of human ZFAND2A
Target Name	ZFAND2A
Other Names	AIRAP
Accession No.	Swiss-Prot#: Q8N6M9 Gene ID: 90637
Calculated MW	16kd
Concentration	5.06666666666667mg/ml
Formulation	Rabbit IgG in pH7.4 PBS, 0.05% NaN ₃ , 40% Glycerol.
Storage	Store at -20°C

Application Details

Western blotting: 1:200-1:1000

Immunohistochemistry: 1:10-1:50

Images



Gel: 12%SDS-PAGE

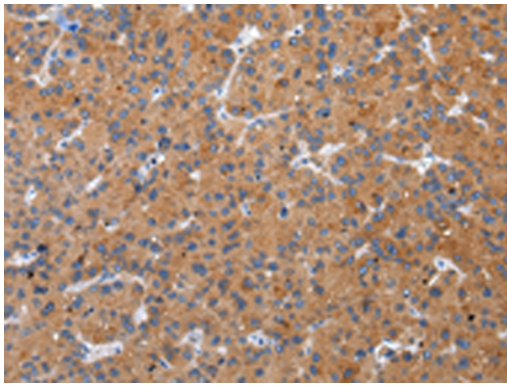
Lysate: 40 µg

Lane: Human normal kidney tissue

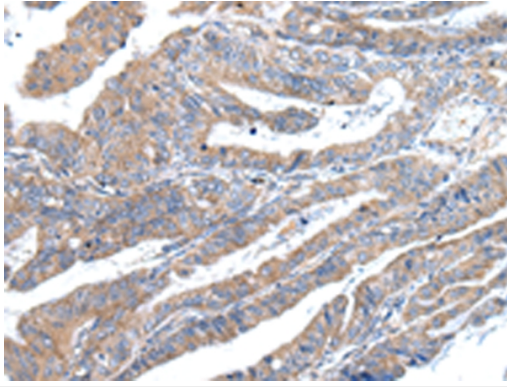
Primary antibody: 1/300 dilution

Secondary antibody: Goat anti rabbit IgG at 1/8000 dilution

Exposure time: 2 minutes



Immunohistochemical analysis of paraffin-embedded Human liver cancer tissue using #43205 at dilution 1/30.



Immunohistochemical analysis of paraffin-embedded Human esophagus cancer tissue using #43205 at dilution 1/30.

Background

ZFAND2A (AN1-type zinc finger protein 2A) is a 171 amino acid protein containing two AN1-type zinc fingers. AN1-type zinc fingers contain six conserved cysteines, two histidines and have a dimetal (zinc)-bound alpha/beta fold. The gene encoding ZFAND2A maps to human chromosome 7, which houses over 1,000 genes and comprises nearly 5% of the human genome.

Note: This product is for in vitro research use only and is not intended for use in humans or animals.