

ZFAND2B Antibody

Catalog No: #43206

Package Size: #43206-1 50ul #43206-2 100ul

Orders: order@signalwayantibody.com

Support: tech@signalwayantibody.com

Description

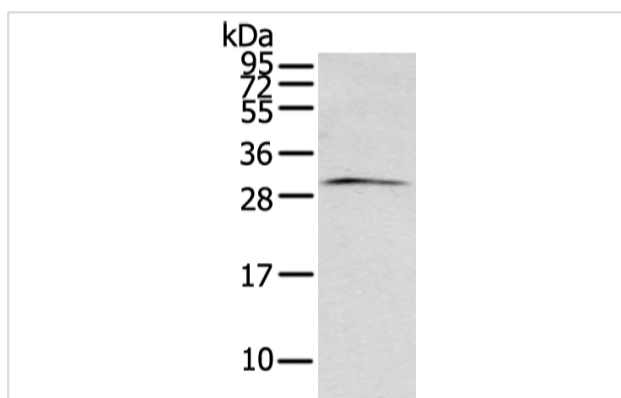
Product Name	ZFAND2B Antibody
Host Species	Rabbit
Clonality	Polyclonal
Purification	Antigen affinity purification.
Applications	WB
Species Reactivity	Hu Ms
Specificity	The antibody detects endogenous levels of total ZFAND2B protein.
Immunogen Type	peptide
Immunogen Description	Synthetic peptide of human ZFAND2B
Target Name	ZFAND2B
Other Names	AIRAPL
Accession No.	Swiss-Prot#: Q8WV99?Gene ID: 130617
Calculated MW	28kd
Concentration	5.2mg/ml
Formulation	Rabbit IgG in pH7.4 PBS, 0.05% NaN ₃ , 40% Glycerol.
Storage	Store at -20°C

Application Details

Western blotting: 1:200-1:1000

Immunohistochemistry: 1:20-1:100

Images



Gel: 12%SDS-PAGE
 Lysate: 40 µg
 Lane: Mouse brain tissue
 Primary antibody: 1/200 dilution
 Secondary antibody: Goat anti rabbit IgG at 1/8000 dilution
 Exposure time: 1 minute

Background

This gene encodes a protein containing AN1-type zinc-fingers and ubiquitin-interacting motifs. The encoded protein likely associates with the proteasome to stimulate the degradation of toxic or misfolded proteins. Alternatively spliced transcript variants encoding multiple isoforms have been

observed for this gene.

Note: This product is for in vitro research use only and is not intended for use in humans or animals.