

ZNF281 Antibody

Catalog No: #43208



Package Size: #43208-1 50ul #43208-2 100ul

Orders: order@signalwayantibody.comSupport: tech@signalwayantibody.com

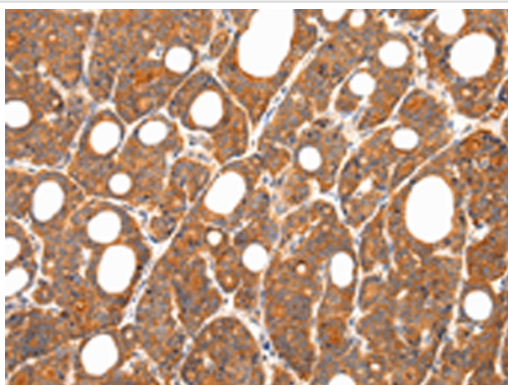
Description

Product Name	ZNF281 Antibody
Host Species	Rabbit
Clonality	Polyclonal
Purification	Antigen affinity purification.
Applications	IHC
Species Reactivity	Hu Ms
Specificity	The antibody detects endogenous levels of total ZNF281 protein.
Immunogen Type	peptide
Immunogen Description	Synthetic peptide of human ZNF281
Target Name	ZNF281
Other Names	ZBP-99; ZNP-99
Accession No.	Swiss-Prot#: Q9Y2X9Gene ID: 23528
Concentration	2.4mg/ml
Formulation	Rabbit IgG in pH7.4 PBS, 0.05% NaN ₃ , 40% Glycerol.
Storage	Store at -20°C

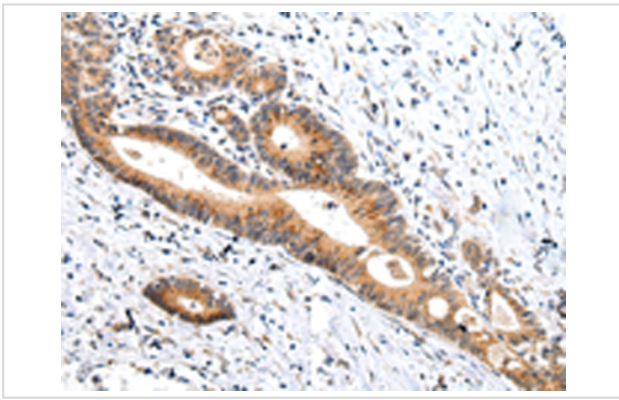
Application Details

Immunohistochemistry: 1:25-1:100

Images



Immunohistochemical analysis of paraffin-embedded Human thyroid cancer tissue using #43208 at dilution 1/35.



Immunohistochemical analysis of paraffin-embedded Human colorectal cancer tissue using #43208 at dilution 1/35.

Background

ZNF281, also known as GC-box-binding zinc finger protein 1, ZBP-99 or ZNP-99 (zinc finger DNA-binding protein 99), is a zinc finger protein that belongs to the KrB`BHppel C2H2-type zinc finger protein family. It is expressed ubiquitously at low levels with predominant expression in kidney, liver, lymphocytes and placenta. ZNF281 localizes to the nucleus and contains four C2H2-type zinc fingers. ZNF281 plays a role in repressing the transcription of a variety of genes including Gastrin and ODC (ornithine decarboxylase). In particular, ZNF281 functions by binding to the G-rich box in the enhancer region of the gene. Upon DNA damage, ZNF281 may become phosphorylated by Atm or ATR.

Note: This product is for in vitro research use only and is not intended for use in humans or animals.