

ZPR1 Antibody

Catalog No: #43210

Package Size: #43210-1 50ul #43210-2 100ul

Orders: order@signalwayantibody.comSupport: tech@signalwayantibody.com

Description

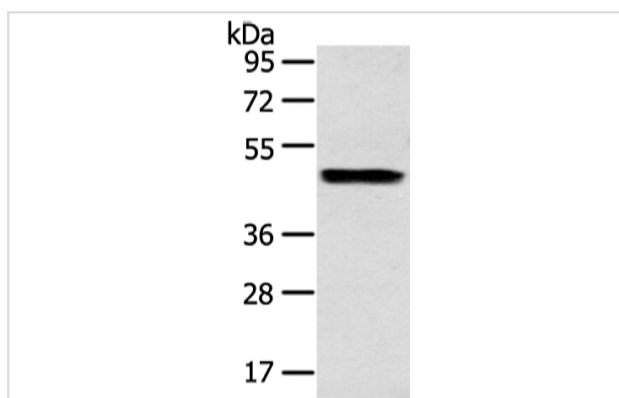
| | |
|-----------------------|---|
| Product Name | ZPR1 Antibody |
| Host Species | Rabbit |
| Clonality | Polyclonal |
| Purification | Antigen affinity purification. |
| Applications | WB IHC |
| Species Reactivity | Hu |
| Specificity | The antibody detects endogenous levels of total ZPR1 protein. |
| Immunogen Type | peptide |
| Immunogen Description | Synthetic peptide of human ZPR1 |
| Target Name | ZPR1 |
| Other Names | ZNF259 |
| Accession No. | Swiss-Prot#: O75312Gene ID: 8882 |
| Calculated MW | 51kd |
| Concentration | 0.8mg/ml |
| Formulation | Rabbit IgG in pH7.4 PBS, 0.05% NaN ₃ , 40% Glycerol. |
| Storage | Store at -20°C |

Application Details

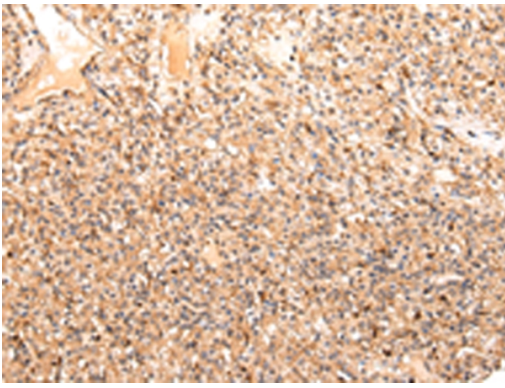
Western blotting: 1:500-1:2000

Immunohistochemistry: 1:25-1:100

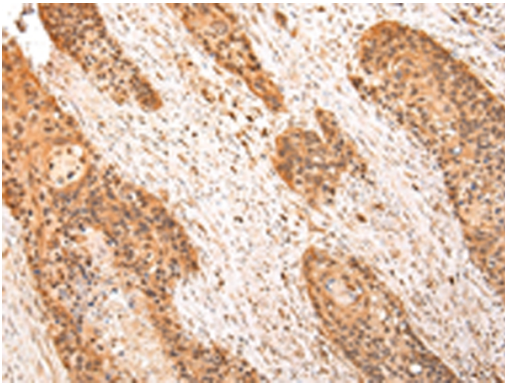
Images



Gel: 8%SDS-PAGE
Lysate: 40 µg
Lane: Human liver cancer tissue
Primary antibody: 1/200 dilution
Secondary antibody: Goat anti rabbit IgG at 1/8000 dilution
Exposure time: 15 seconds



Immunohistochemical analysis of paraffin-embedded Human prostate cancer tissue using #43210 at dilution 1/20.



Immunohistochemical analysis of paraffin-embedded Human esophagus cancer tissue using #43210 at dilution 1/20.

Background

ZPR1 is a zinc finger-containing protein that is capable of binding to the intracellular tyrosine kinase domain of the epidermal growth factor receptor. Stimulation of mammalian cells with epidermal growth factor reduces ZPR1 affinity for the EGFR and leads to an accumulation of the protein in the nucleus. The ZPR1 zinc finger is necessary for its association with the EGFR.

Note: This product is for in vitro research use only and is not intended for use in humans or animals.