

ZNF420 Antibody

Catalog No: #43213



Package Size: #43213-1 50ul #43213-2 100ul

Orders: order@signalwayantibody.comSupport: tech@signalwayantibody.com

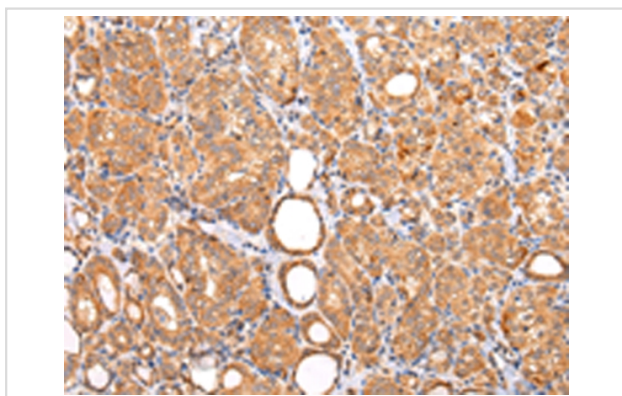
Description

Product Name	ZNF420 Antibody
Host Species	Rabbit
Clonality	Polyclonal
Purification	Antigen affinity purification.
Applications	IHC
Species Reactivity	Hu
Specificity	The antibody detects endogenous levels of total ZNF420 protein.
Immunogen Type	peptide
Immunogen Description	Synthetic peptide of human ZNF420
Target Name	ZNF420
Other Names	APAK
Accession No.	Swiss-Prot#: Q8TAQ5 Gene ID: 147923
Concentration	1mg/ml
Formulation	Rabbit IgG in pH7.4 PBS, 0.05% NaN ₃ , 40% Glycerol.
Storage	Store at -20°C

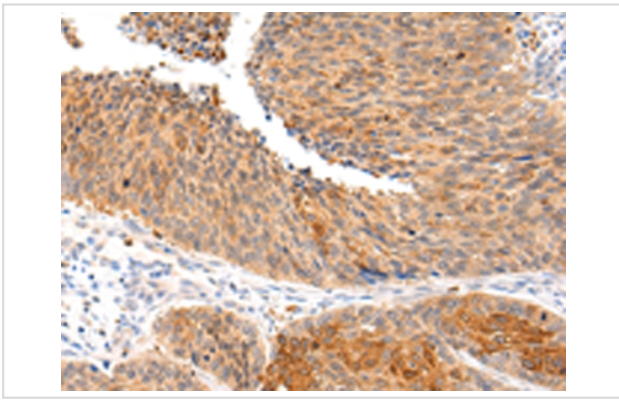
Application Details

Immunohistochemistry: 1:20-1:100

Images



Immunohistochemical analysis of paraffin-embedded Human thyroid cancer tissue using #43213 at dilution 1/20.



Immunohistochemical analysis of paraffin-embedded Human lung cancer tissue using #43213 at dilution 1/20.

Background

May be involved in transcriptional regulation.

Note: This product is for in vitro research use only and is not intended for use in humans or animals.