

ECM1 Antibody

Catalog No: #43263



Package Size: #43263-1 50ul #43263-2 100ul

Orders: order@signalwayantibody.comSupport: tech@signalwayantibody.com

Description

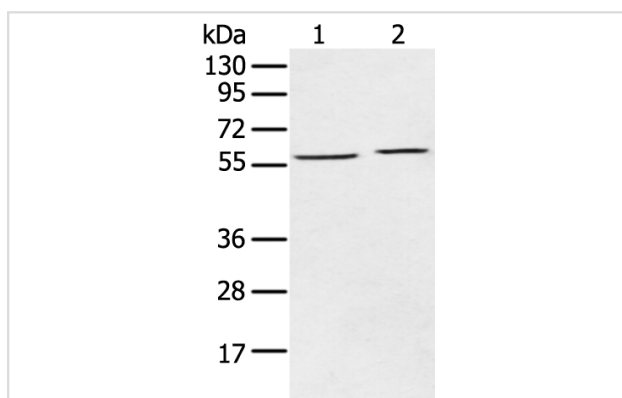
Product Name	ECM1 Antibody
Host Species	Rabbit
Clonality	Polyclonal
Purification	Antigen affinity purification.
Applications	WB IHC
Species Reactivity	Hu
Specificity	The antibody detects endogenous levels of total ECM1 protein.
Immunogen Type	peptide
Immunogen Description	Synthetic peptide of human ECM1
Target Name	ECM1
Other Names	URBWD
Accession No.	Swiss-Prot#: Q16610 Gene ID: 1893
Calculated MW	61kd
Concentration	1.8mg/ml
Formulation	Rabbit IgG in pH7.4 PBS, 0.05% NaN ₃ , 40% Glycerol.
Storage	Store at -20°C

Application Details

Western blotting: 1:200-1:1000

Immunohistochemistry: 1:25-1:100

Images



Gel: 8%SDS-PAGE

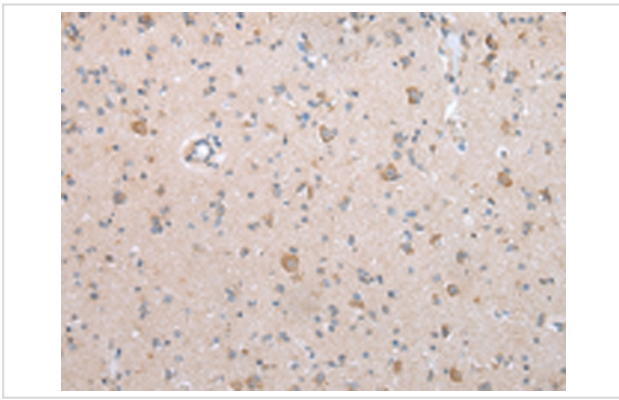
Lysate: 40 µg

Lane 1-2: A549 and A375 cell

Primary antibody: 1/200 dilution

Secondary antibody: Goat anti rabbit IgG at 1/8000 dilution

Exposure time: 10 seconds



Immunohistochemical analysis of paraffin-embedded Human brain tissue using #43263 at dilution 1/20,

Background

This gene encodes a soluble protein that is involved in endochondral bone formation, angiogenesis, and tumor biology. It also interacts with a variety of extracellular and structural proteins, contributing to the maintenance of skin integrity and homeostasis. Mutations in this gene are associated with lipoid proteinosis disorder (also known as hyalinosi cutis et mucosae or Urbach-Wiethe disease) that is characterized by generalized thickening of skin, mucosae and certain viscera. Alternatively spliced transcript variants encoding distinct isoforms have been described for this gene.

Published Papers

el et al., Stable-protein Pair Analysis as A Novel Strategy to Identify Proteomic Signatures: Application To Seminal Plasma From Infertile Patients. In Mol Cell Proteomics on 2019 Mar 15 by Barrachina F, Jodar M, et al..PMID:30518674, , (2019)

[PMID:30518674](#)

Note: This product is for in vitro research use only and is not intended for use in humans or animals.