

alkaline phosphatase(intestinal) antibody

Catalog No: #22854



Orders: order@signalwayantibody.com

Support: tech@signalwayantibody.com

Description

Product Name	alkaline phosphatase(intestinal) antibody
Host Species	Rabbit
Clonality	Polyclonal
Purification	Purified by antigen-affinity chromatography.
Applications	WB IHC
Species Reactivity	Hu
Immunogen Type	Recombinant protein
Immunogen Description	Recombinant protein fragment contain a sequence corresponding to a region within amino acids 3 and 216 of alkaline phosphatase(intestinal)
Target Name	alkaline phosphatase(intestinal)
Accession No.	NCBI Gene ID: 248NCBI mRNA#: NM_001631NCBI Protein#: NP_001622
Concentration	1mg/ml
Formulation	Supplied in 0.1M Tris-buffered saline with 10% Glycerol (pH7.0). 0.01% Thimerosal was added as a preservative.
Storage	Store at -20°C for long term preservation (recommended). Store at 4°C for short term use.

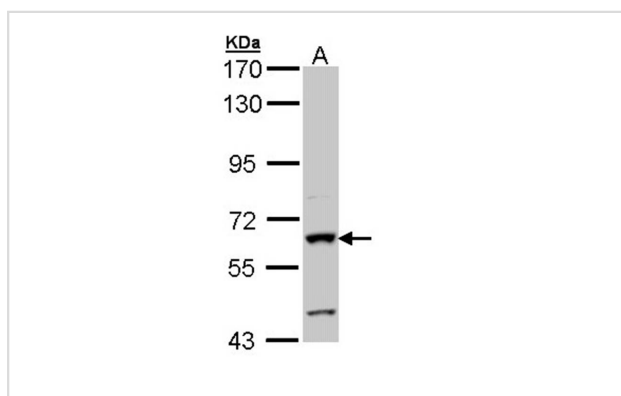
Application Details

Predicted MW: 57kd

Western blotting: 1:500-1:3000

Immunohistochemistry: 1:100-1:500

Images

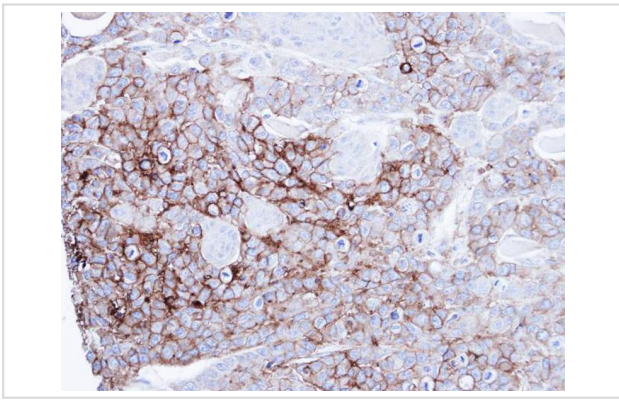


Sample (30 ug of whole cell lysate)

A: Hep G2

7.5% SDS PAGE

Primary antibody diluted at 1: 1000



Immunohistochemical analysis of paraffin-embedded SG xenograft, using alkaline phosphatase(intestinal) antibody at 1: 100 dilution.

Background

There are at least four distinct but related alkaline phosphatases: intestinal, placental, placental-like, and liver/bone/kidney (tissue non-specific). The intestinal alkaline phosphatase gene encodes a digestive brush-border enzyme. This enzyme is upregulated during small intestinal epithelial cell differentiation. [provided by RefSeq]

Note: This product is for in vitro research use only and is not intended for use in humans or animals.