

ZFP28 Antibody

Catalog No: #43349



Package Size: #43349-1 50ul #43349-2 100ul

Orders: order@signalwayantibody.comSupport: tech@signalwayantibody.com

Description

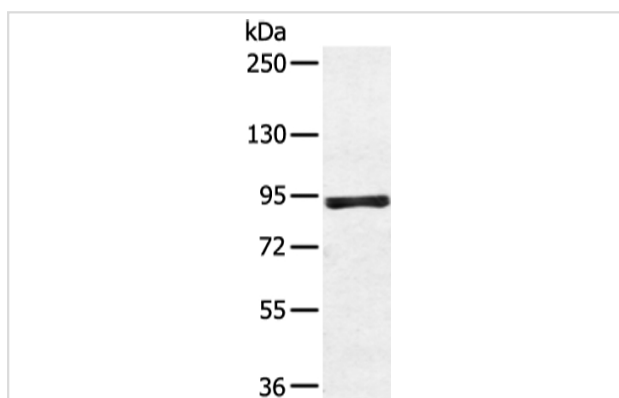
Product Name	ZFP28 Antibody
Host Species	Rabbit
Clonality	Polyclonal
Purification	Antigen affinity purification.
Applications	WB
Species Reactivity	Hu
Specificity	The antibody detects endogenous levels of total ZFP28 protein.
Immunogen Type	protein
Immunogen Description	Fusion protein of human ZFP28
Target Name	ZFP28
Other Names	mkr5
Accession No.	Swiss-Prot#: Q8NHY6 Gene ID: 140612
Calculated MW	99kd
Concentration	1.7mg/ml
Formulation	Rabbit IgG in pH7.4 PBS, 0.05% NaN ₃ , 40% Glycerol.
Storage	Store at -20°C

Application Details

Western blotting: 1:200-1:1000

Immunohistochemistry: 1:10-1:50

Images



Gel: 6%SDS-PAGE
 Lysate: 40 µg
 Lane: 293T cell
 Primary antibody: 1/450 dilution
 Secondary antibody: Goat anti rabbit IgG at 1/8000 dilution
 Exposure time: 10 seconds

Background

May be involved in transcriptional regulation. May have a role in embryonic development.

Note: This product is for in vitro research use only and is not intended for use in humans or animals.