

## Axin 1 antibody

Catalog No: #22862

Orders: order@signalwayantibody.com

Support: tech@signalwayantibody.com

## Description

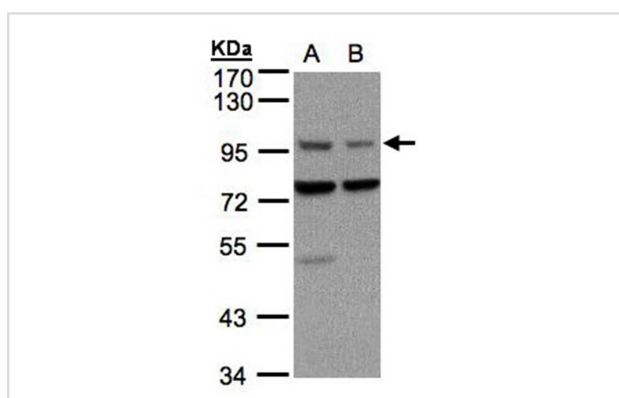
Product Name	Axin 1 antibody
Host Species	Rabbit
Clonality	Polyclonal
Purification	Purified by antigen-affinity chromatography.
Applications	WB
Species Reactivity	Hu
Immunogen Type	Peptide
Immunogen Description	Synthetic peptide contain a sequence corresponding to a region within amino acids 800 and 862 of Human AXIN1
Target Name	Axin 1
Accession No.	NCBI Gene ID: 8312NCBI mRNA#: NM_003502NCBI Protein#: NP_003493
Concentration	0.8mg/ml
Formulation	Supplied in 0.1M Tris-buffered saline with 10% Glycerol (pH7.0). 0.01% Thimerosal was added as a preservative.
Storage	Store at -20°C for long term preservation (recommended). Store at 4°C for short term use.

## Application Details

Predicted MW: 96kd

Western blotting: 1:500-1:3000

## Images



Sample(30 ug of whole cell lysate)  
 A: A431  
 B: H1299  
 7.5% SDS PAGE  
 Primary antibody diluted at 1: 1500

## Background

This gene encodes a cytoplasmic protein which contains a regulation of G-protein signaling (RGS) domain and a dishevelled and axin (DIX) domain. The encoded protein interacts with adenomatosis polyposis coli, catenin (cadherin-associated protein), beta 1, 88kDa, glycogen synthase kinase 3 beta, protein phosphate 2, and itself. This protein functions as a negative regulator of the wntless-type MMTV integration site family, member 1 (WNT) signaling pathway and can induce apoptosis. The crystal structure of a portion of this protein, alone and in a complex with other proteins, has been resolved. Mutations in this gene have been associated with hepatocellular carcinoma, hepatoblastomas, ovarian endometriod adenocarcinomas,

and medullablastomas. Two transcript variants encoding distinct isoforms have been identified for this gene. [provided by RefSeq]

---

Note: This product is for in vitro research use only and is not intended for use in humans or animals.