

LYPLA2 Antibody

Catalog No: #43391



Package Size: #43391-1 50ul #43391-2 100ul

Orders: order@signalwayantibody.comSupport: tech@signalwayantibody.com

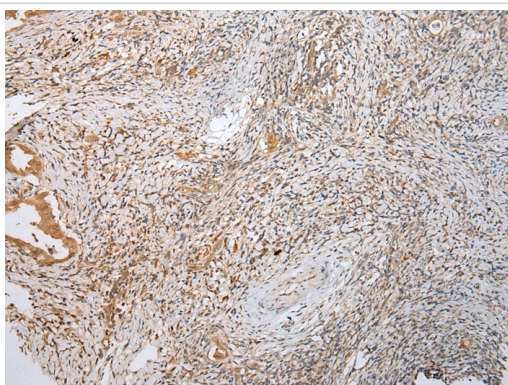
Description

| | |
|-----------------------|---|
| Product Name | LYPLA2 Antibody |
| Host Species | Rabbit |
| Clonality | Polyclonal |
| Purification | Antigen affinity purification. |
| Applications | IHC |
| Species Reactivity | Hu |
| Specificity | The antibody detects endogenous levels of total LYPLA2 protein. |
| Immunogen Description | Full length fusion protein of human LYPLA2 |
| Target Name | LYPLA2 |
| Other Names | APT2; APT-2; DJ886K2.4 |
| Accession No. | Swiss-Prot#: O95372 Gene ID: 11313 |
| Concentration | 0.9mg/ml |
| Formulation | Rabbit IgG in pH7.4 PBS, 0.05% NaN ₃ , 40% Glycerol. |
| Storage | Store at -20°C |

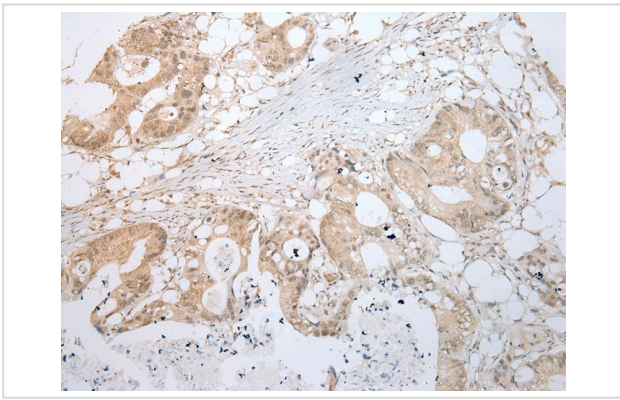
Application Details

Immunohistochemistry: 1:100-1:200

Images



Immunohistochemical analysis of paraffin-embedded Human Cervical cancer tissue using #43391 at dilution 1/100,



Immunohistochemical analysis of paraffin-embedded Human Colorectal cancer tissue using #43391 at dilution 1/100,

Background

Lysophospholipases are enzymes that act on biological membranes to regulate the multifunctional lysophospholipids. There are alternatively spliced transcript variants described for this gene but the full length nature is not known yet.

Note: This product is for in vitro research use only and is not intended for use in humans or animals.