

XPB antibody

Catalog No: #22871

Orders: order@signalwayantibody.com

Support: tech@signalwayantibody.com

Description

Product Name	XPB antibody
Host Species	Rabbit
Clonality	Polyclonal
Purification	Purified by antigen-affinity chromatography.
Applications	WB IF
Species Reactivity	Hu
Immunogen Type	Recombinant protein
Immunogen Description	Recombinant protein fragment contain a sequence corresponding to a region within amino acids 521 and 702 (P19447) of XPB
Target Name	XPB
Accession No.	NCBI Gene ID: 2071NCBI mRNA#: NM_000122NCBI Protein#: NP_000113
Concentration	0.7mg/ml
Formulation	Supplied in 0.1M Tris-buffered saline with 10% Glycerol (pH7.0). 0.01% Thimerosal was added as a preservative.
Storage	Store at -20°C for long term preservation (recommended). Store at 4°C for short term use.

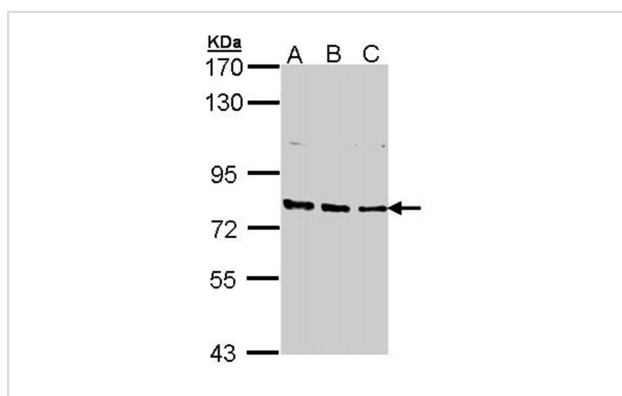
Application Details

Predicted MW: 89kd

Western blotting: 1:500-1:3000

Immunofluorescence: 1:100-1:200

Images



Sample (30 ug of whole cell lysate)

A: 293T

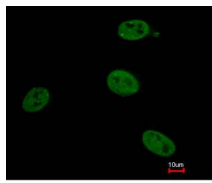
B: A431

C: H1299

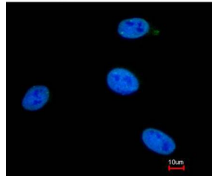
7.5% SDS PAGE

Primary antibody diluted at 1: 1000

Immunofluorescence analysis of paraformaldehyde-fixed HeLa, using XPB antibody at 1: 200 dilution.



Merged with DNA probe



Background

ERCC3 is an ATP-dependent DNA helicase that functions in nucleotide excision repair and complements xeroderma pigmentosum group B mutations. It also is the 89 kDa subunit of basal transcription factor 2 (TFIIH) and thus functions in class II transcription. [provided by RefSeq]

Note: This product is for in vitro research use only and is not intended for use in humans or animals.