

NRAS/HRAS/KRAS Antibody

Catalog No: #43477



Package Size: #43477-1 50ul #43477-2 100ul

Orders: order@signalwayantibody.com

Support: tech@signalwayantibody.com

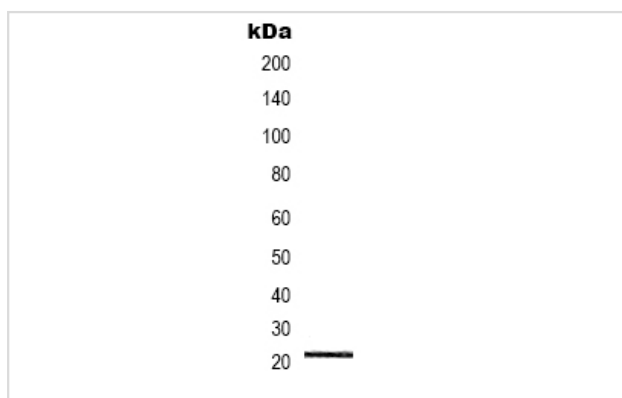
Description

Product Name	NRAS/HRAS/KRAS Antibody
Host Species	Rabbit
Clonality	Polyclonal
Purification	Antibodies were produced by immunizing rabbits with synthetic peptide and KLH conjugates. Antibodies were purified by affinity-chromatography using epitope-specific peptide.
Applications	WB
Species Reactivity	Hu Ms Rt
Specificity	The antibody detects endogenous level of total NRAS/HRAS/KRAS protein.
Immunogen Type	Peptide
Immunogen Description	Peptide sequence around aa.10~60 derived from Human NRAS/HRAS/KRAS.
Target Name	NRAS/HRAS/KRAS
Other Names	N-Ras; HRAS1; K-Ras 2; Ki-Ras; H-Ras-1
Accession No.	Swiss-Prot#: P01111/P01112/P01116NCBI Protein#: NP_002515.1 /NP_001123914.1 . /NP_004976.2
Target Species	Human
Calculated MW	21kd
Concentration	1.0mg/mL
Formulation	Supplied at 1.0mg/mL in phosphate buffered saline (without Mg ²⁺ and Ca ²⁺), pH 7.4, 150mM NaCl, 0.02% sodium azide and 50% glycerol.
Storage	Store at -20°C

Application Details

Western blotting: 1:500-1:1000

Images



Western blot analysis of extracts from HEK293 cells using NRAS/HRAS/KRAS Antibody #43477.

Background

Ras proteins bind GDP/GTP and possess intrinsic GTPase activity. Plays an important role in the regulation of cell proliferation.

Taparowsky E., Shimizu K., Goldfarb M., Wigler M. Cell 34:581-586(1983)

Reddy E.P. Science 220:1061-1063(1983)

Shimizu K., Birnbaum D., Ruley M.A., Fasano O., Suard Y., Edlund L., Taparowsky E., Goldfarb M., Wigler M. Nature 304:497-500(1983)

Note: This product is for in vitro research use only and is not intended for use in humans or animals.