

## QSOX1 Antibody

Catalog No: #43528



Package Size: #43528-1 50ul #43528-2 100ul

Orders: order@signalwayantibody.com

Support: tech@signalwayantibody.com

## Description

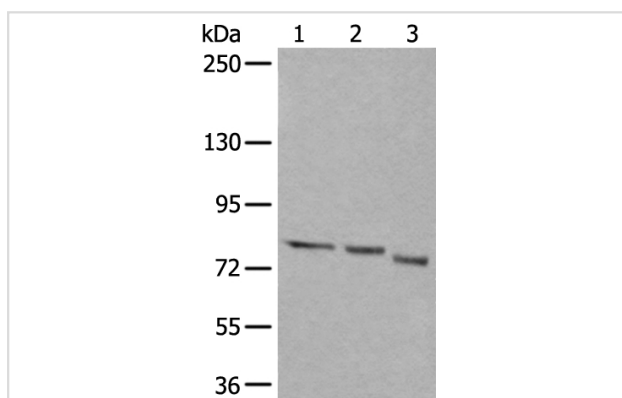
Product Name	QSOX1 Antibody
Host Species	Rabbit
Clonality	Polyclonal
Purification	Antigen affinity purification
Applications	IHC WB
Species Reactivity	Hu
Specificity	The antibody detects endogenous levels of total QSOX1 protein.
Immunogen Type	protein
Immunogen Description	Fusion protein of human QSOX1
Target Name	QSOX1
Other Names	Q6; QSCN6
Accession No.	Swiss-Prot#: O00391NCBI Gene ID: 5768
Calculated MW	83kd
Concentration	0.8mg/ml
Formulation	Rabbit IgG in pH7.4 PBS, 0.05% NaN <sub>3</sub> , 40% Glycerol.
Storage	Store at -20°C

## Application Details

Western blotting: 1:200-1000

Immunohistochemistry: 1: 20-100

## Images



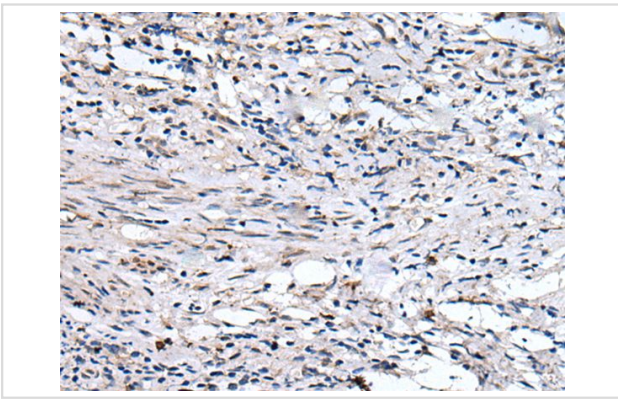
Gel: 6%SDS-PAGE

Lysate: 40 µg, Lane 1-3: 293T, HeLa and 231 cell lysates,

Primary antibody: QSOX1 antibody at dilution 1/350,

Secondary antibody: Goat anti rabbit IgG at 1/8000 dilution,

Exposure time: 40 seconds



The image on the left is immunohistochemistry of paraffin-embedded Human cervical cancer tissue using QSOX1 Antibody at dilution 1/35, on the right is treated with fusion protein. (Original magnification: x200)

## Background

This gene encodes a protein that contains domains of thioredoxin and ERV1, members of two long-standing gene families. The gene expression is induced as fibroblasts begin to exit the proliferative cycle and enter quiescence, suggesting that this gene plays an important role in growth regulation. Two transcript variants encoding two different isoforms have been found for this gene.?

Note: This product is for in vitro research use only and is not intended for use in humans or animals.