

YPEL1 Antibody

Catalog No: #43586



Package Size: #43586-1 50ul #43586-2 100ul

Orders: order@signalwayantibody.comSupport: tech@signalwayantibody.com

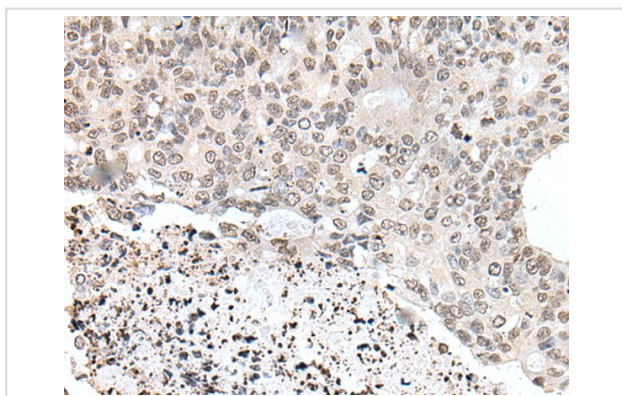
Description

Product Name	YPEL1 Antibody
Host Species	Rabbit
Clonality	Polyclonal
Purification	Antigen affinity purification
Applications	IHC
Species Reactivity	Hu
Specificity	The antibody detects endogenous levels of total YPEL1 protein.
Immunogen Type	protein
Immunogen Description	Full length fusion protein
Target Name	YPEL1
Other Names	FKSG3
Accession No.	Swiss-Prot#: O60688NCBI Gene ID: 29799
Concentration	0.7mg/ml
Formulation	Rabbit IgG in pH7.4 PBS, 0.05% NaN ₃ , 40% Glycerol.
Storage	Store at -20°C

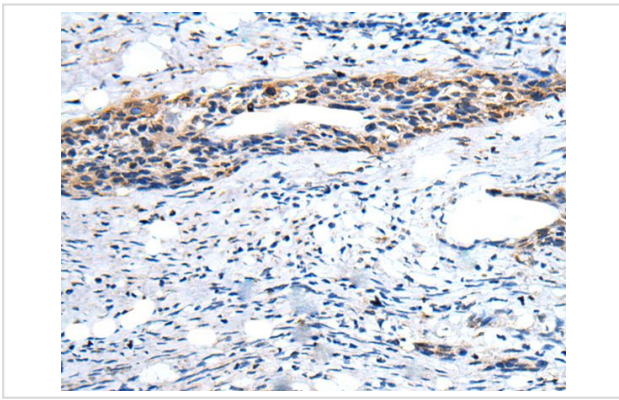
Application Details

Immunohistochemistry: 1: 20-100

Images



The image on the left is immunohistochemistry of paraffin-embedded Human colorectal cancer tissue using YPEL1 Antibody at dilution 1/30, on the right is treated with fusion protein. (Original magnification: x200)



The image on the left is immunohistochemistry of paraffin-embedded Human cervical cancer tissue using YPEL1 Antibody at dilution 1/30, on the right is treated with fusion protein. (Original magnification: x200)

Background

This gene is located in the region associated with DiGeorge syndrome on chromosome 22. The encoded protein localizes to the centrosome and nucleolus and may play a role in the regulation of cell division.?

Note: This product is for in vitro research use only and is not intended for use in humans or animals.