

SENP2 antibody

Catalog No: #22882

Orders: order@signalwayantibody.comSupport: tech@signalwayantibody.com

Description

Product Name	SENP2 antibody
Host Species	Rabbit
Clonality	Polyclonal
Purification	Purified by antigen-affinity chromatography.
Applications	WB IHC
Species Reactivity	Hu
Immunogen Type	Peptide
Immunogen Description	Synthetic peptide contain a sequence corresponding to a region within amino acids 1 and 32 of SENP2
Target Name	SENP2
Accession No.	NCBI Gene ID: 59343NCBI mRNA#: NM_021627NCBI Protein#: NP_067640
Concentration	1mg/ml
Formulation	Supplied in 0.1M Tris-buffered saline with 10% Glycerol (pH7.0). 0.01% Thimerosal was added as a preservative.
Storage	Store at -20°C for long term preservation (recommended). Store at 4°C for short term use.

Application Details

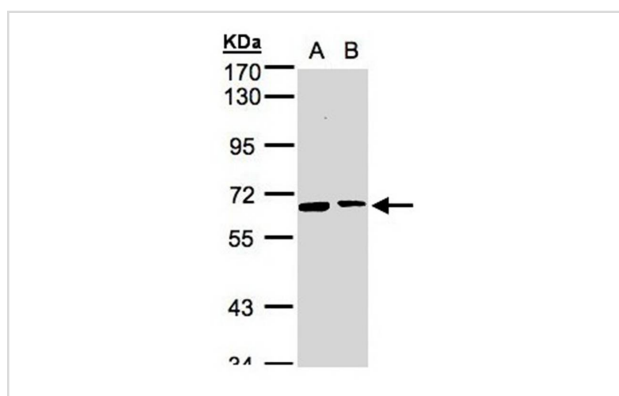
Predicted MW: 68kd

Western blotting: 1:500-1:3000

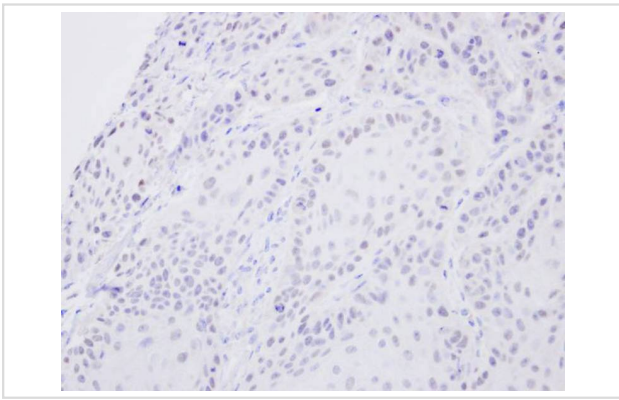
Immunohistochemistry: 1:50-1:500

Immunofluorescence: 1:100-1:200

Images



Sample(30 ug whole cell lysate)
 A: 293T
 B: MOLT4
 7.5% SDS PAGE
 Primary antibody diluted at 1: 1000



Immunohistochemical analysis of paraffin-embedded Cal27 xenograft, using SENP2 antibody at 1: 500 dilution.

Background

SUMO1 (UBL1; MIM 601912) is a small ubiquitin-like protein that can be covalently conjugated to other proteins. SENP2 is one of a group of enzymes that process newly synthesized SUMO1 into the conjugatable form and catalyze the deconjugation of SUMO1-containing species. [supplied by OMIM]

Note: This product is for in vitro research use only and is not intended for use in humans or animals.