

## VPREB3 Antibody

Catalog No: #43594

Package Size: #43594-1 50ul #43594-2 100ul

Orders: [order@signalwayantibody.com](mailto:order@signalwayantibody.com)Support: [tech@signalwayantibody.com](mailto:tech@signalwayantibody.com)

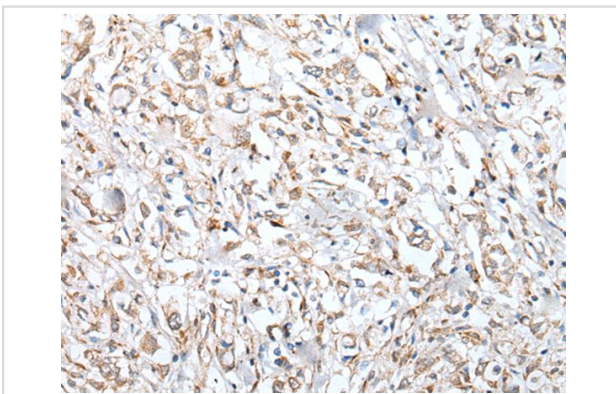
## Description

Product Name	VPREB3 Antibody
Host Species	Rabbit
Clonality	Polyclonal
Purification	Antigen affinity purification
Applications	IHC
Species Reactivity	Hu
Specificity	The antibody detects endogenous levels of total VPREB3 protein.
Immunogen Type	protein
Immunogen Description	Fusion protein of human VPREB3
Target Name	VPREB3
Other Names	8HS20; N27C7-2
Accession No.	Swiss-Prot#: Q9UKI3NCBI Gene ID: 29802
Concentration	0.7mg/ml
Formulation	Rabbit IgG in pH7.4 PBS, 0.05% NaN <sub>3</sub> , 40% Glycerol.
Storage	Store at -20°C

## Application Details

Immunohistochemistry: 1: 20-100

## Images



The image on the left is immunohistochemistry of paraffin-embedded Human gastric cancer tissue using VPREB3 Antibody at dilution 1/30, on the right is treated with fusion protein. (Original magnification: x200)

## Background

The protein encoded by this gene is the human ortholog of the mouse VpreB3 (8HS20) protein, is thought to be involved in B-cell maturation, and may play a role in assembly of the pre-B cell receptor (pre-BCR). While the role of this protein in B-cell development has not yet been elucidated, studies with the chicken ortholog of this protein have found that when overexpressed, this protein localizes to the endoplasmic reticulum. The mouse ortholog of this protein has been shown to associate with membrane mu heavy chains early in the course of pre-B cell receptor biosynthesis. Expression of this

gene has been observed in some lymphomas.

---

Note: This product is for in vitro research use only and is not intended for use in humans or animals.