

VSX1 Antibody

Catalog No: #43597

Package Size: #43597-1 50ul #43597-2 100ul

Orders: order@signalwayantibody.com

Support: tech@signalwayantibody.com

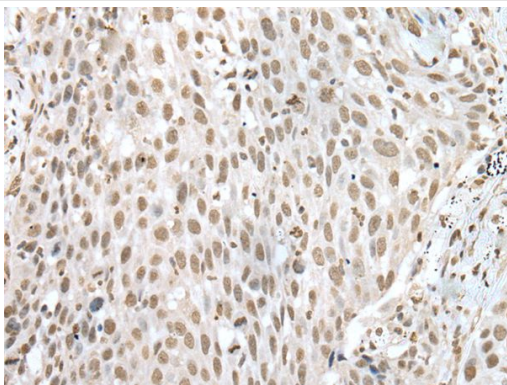
Description

Product Name	VSX1 Antibody
Host Species	Rabbit
Clonality	Polyclonal
Purification	Antigen affinity purification
Applications	IHC
Species Reactivity	Hu
Specificity	The antibody detects endogenous levels of total VSX1 protein.
Immunogen Type	protein
Immunogen Description	Fusion protein of human VSX1
Target Name	VSX1
Other Names	PPD; KTCN; PPCD; RINX; KTCN1; PPCD1; CAASDS
Accession No.	Swiss-Prot#: Q9NZR4NCBI Gene ID: 30813
Concentration	0.6mg/ml
Formulation	Rabbit IgG in pH7.4 PBS, 0.05% NaN ₃ , 40% Glycerol.
Storage	Store at -20°C

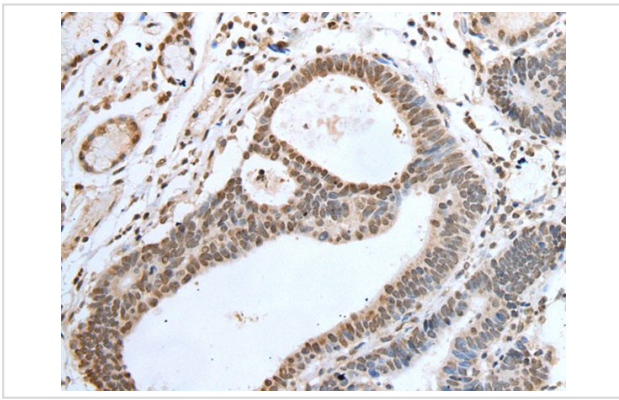
Application Details

Immunohistochemistry: 1: 20-100

Images



The image on the left is immunohistochemistry of paraffin-embedded Human lung cancer tissue using VSX1 Antibody at dilution 1/30, on the right is treated with fusion protein. (Original magnification: x200)



The image on the left is immunohistochemistry of paraffin-embedded Human gastric cancer tissue using VSX1 Antibody at dilution 1/30, on the right is treated with fusion protein. (Original magnification: x200)

Background

The protein encoded by this gene contains a paired-like homeodomain and binds to the core of the locus control region of the red/green visual pigment gene cluster. The encoded protein may regulate expression of the cone opsin genes early in development. Mutations in this gene can cause posterior polymorphous corneal dystrophy and keratoconus. Alternatively spliced transcript variants encoding different isoforms have been described.

Note: This product is for in vitro research use only and is not intended for use in humans or animals.