

GZMH Antibody

Catalog No: #43676



Package Size: #43676-1 50ul #43676-2 100ul

Orders: order@signalwayantibody.com

Support: tech@signalwayantibody.com

Description

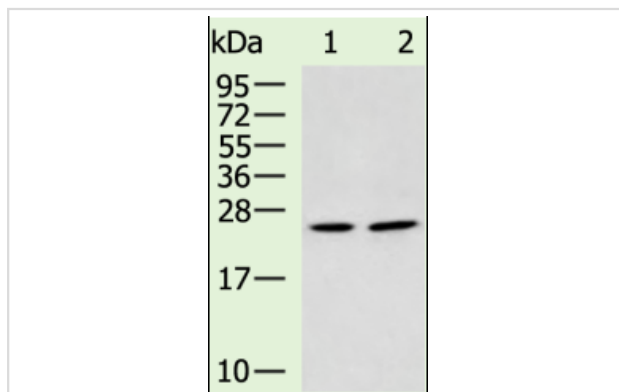
Product Name	GZMH Antibody
Host Species	Rabbit
Clonality	Polyclonal
Purification	Antigen affinity purification
Applications	WB
Species Reactivity	Human
Specificity	The antibody detects endogenous levels of GZMH protein.
Immunogen Description	Synthetic peptide of human GZMH
Target Name	GZMH
Other Names	CCP-X; CGL-2; CSP-C; CTLA1; CTSL2
Accession No.	Swiss-Prot#: P20718NCBI Gene ID: 2999
Calculated MW	27kd
Concentration	1.8mg/ml
Formulation	Rabbit IgG in pH7.4 PBS, 0.05% NaN ₃ , 40% Glycerol.
Storage	Store at -20°C

Application Details

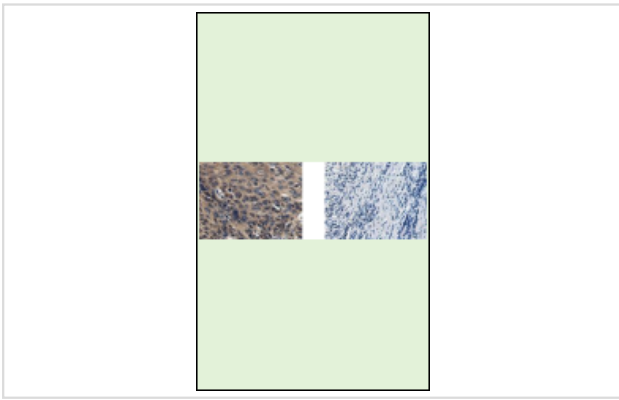
WB 1:1000~1:5000

IHC 1:50~1:200

Images



"Gel: 12%SDS-PAGE Lysate: 40 ug Lane 1-2: HeLa and 231 cell lysates Primary antibody: at dilution 1/1000 Secondary antibody: at 1/5000 dilution Exposure time: 1 minute "



"The image on the left is immunohistochemistry of paraffin-embedded Human esophagus cancer using at dilution 1/75, on the right is treated with synthetic peptide. (Original magnification: 200)"

Background

This gene encodes a member of the peptidase S1 family of serine proteases. Alternative splicing results in multiple transcript variants, at least one of which encodes a preproprotein that is proteolytically processed to generate a chymotrypsin-like protease. This protein is reported to be constitutively expressed in the NK (natural killer) cells of the immune system and may play a role in the cytotoxic arm of the innate immune response by inducing target cell death and by directly cleaving substrates in pathogen-infected cells. This gene is present in a gene cluster with another member of the granzyme subfamily on chromosome 14.

Note: This product is for in vitro research use only and is not intended for use in humans or animals.