

XDH Antibody

Catalog No: #43800

Package Size: #43800-1 50ul #43800-2 100ul

Orders: order@signalwayantibody.comSupport: tech@signalwayantibody.com

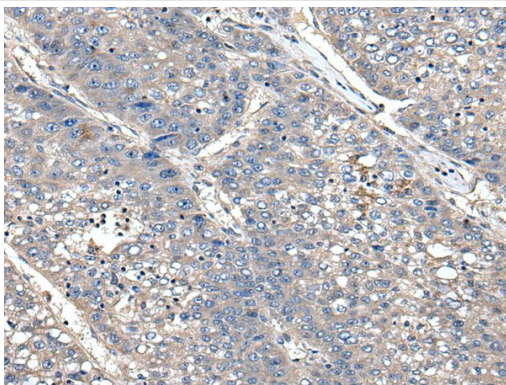
Description

Product Name	XDH Antibody
Host Species	Rabbit
Clonality	Polyclonal
Purification	Antigen affinity purification
Applications	IHC
Species Reactivity	Hu
Specificity	The antibody detects endogenous levels of total XDH protein.
Immunogen Type	peptide
Immunogen Description	Synthetic peptide of human XDH
Target Name	XDH
Other Names	XO; XOR
Accession No.	Swiss-Prot#: P47989NCBI Gene ID: 7498
Concentration	2.1mg/ml
Formulation	Rabbit IgG in pH7.4 PBS, 0.05% NaN ₃ , 40% Glycerol.
Storage	Store at -20°C

Application Details

Immunohistochemistry: 1: 100-300

Images



The image on the left is immunohistochemistry of paraffin-embedded Human liver cancer tissue using XDH Antibody at dilution 1/100, on the right is treated with synthetic peptide. (Original magnification: x200)

Background

Xanthine dehydrogenase belongs to the group of molybdenum-containing hydroxylases involved in the oxidative metabolism of purines. The encoded protein has been identified as a moonlighting protein based on its ability to perform mechanistically distinct functions. Xanthine dehydrogenase can be converted to xanthine oxidase by reversible sulfhydryl oxidation or by irreversible proteolytic modification. Defects in xanthine dehydrogenase cause xanthinuria, may contribute to adult respiratory stress syndrome, and may potentiate influenza infection through an oxygen metabolite-dependent

mechanism.?

Note: This product is for in vitro research use only and is not intended for use in humans or animals.