

VPS35 Antibody

Catalog No: #43824



Package Size: #43824-1 50ul #43824-2 100ul

Orders: order@signalwayantibody.com

Support: tech@signalwayantibody.com

Description

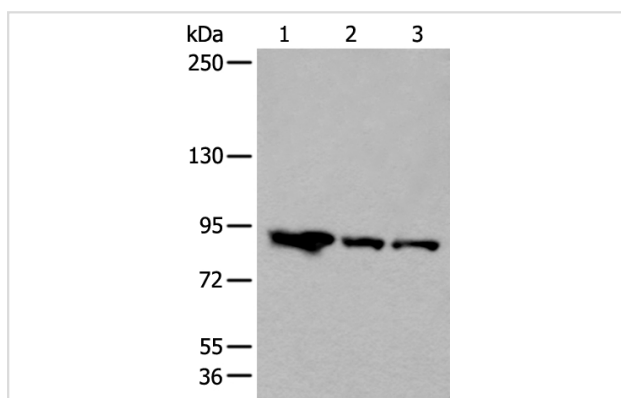
Product Name	VPS35 Antibody
Host Species	Rabbit
Clonality	Polyclonal
Purification	Antigen affinity purification
Applications	IHC WB
Species Reactivity	Hu Ms
Specificity	The antibody detects endogenous levels of total VPS35 protein.
Immunogen Type	peptide
Immunogen Description	Synthetic peptide of human VPS35
Target Name	VPS35
Other Names	MEM3; PARK17
Accession No.	Swiss-Prot#: Q96QK1NCBI Gene ID: 55737
Calculated MW	92kd
Concentration	0.5mg/ml
Formulation	Rabbit IgG in pH7.4 PBS, 0.05% NaN ₃ , 40% Glycerol.
Storage	Store at -20°C

Application Details

Western blotting: 1:200-1000

Immunohistochemistry: 1: 20-100

Images



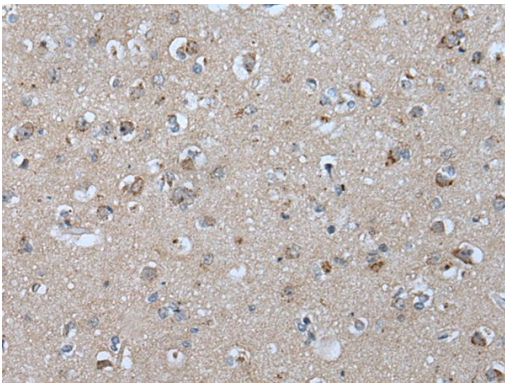
Gel: 6%SDS-PAGE

Lysate: 40 µg, Lane 1-3: Mouse brain tissue, Human cerebella tissue, A549 cell lysates,

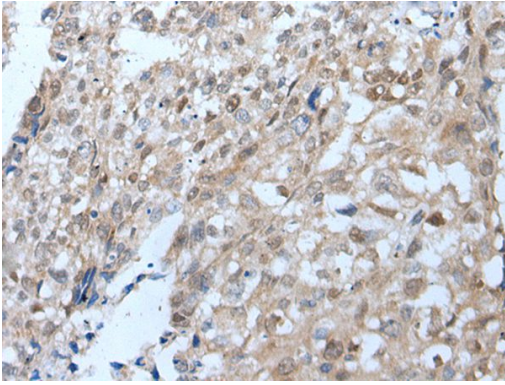
Primary antibody: VPS35 antibody at dilution 1/200,

Secondary antibody: Goat anti rabbit IgG at 1/8000 dilution,

Exposure time: 1 minute



The image on the left is immunohistochemistry of paraffin-embedded Human brain tissue using VPS35 Antibody at dilution 1/25, on the right is treated with synthetic peptide. (Original magnification: x200)



The image on the left is immunohistochemistry of paraffin-embedded Human lung cancer tissue using VPS35 Antibody at dilution 1/25, on the right is treated with synthetic peptide. (Original magnification: x200)

Background

This gene belongs to a group of vacuolar protein sorting (VPS) genes. The encoded protein is a component of a large multimeric complex, termed the retromer complex, involved in retrograde transport of proteins from endosomes to the trans-Golgi network. The close structural similarity between the yeast and human proteins that make up this complex suggests a similarity in function. Expression studies in yeast and mammalian cells indicate that this protein interacts directly with VPS35, which serves as the core of the retromer complex.

Note: This product is for in vitro research use only and is not intended for use in humans or animals.