

## LAT Antibody

Catalog No: #43949

Package Size: #43949-1 50ul #43949-2 100ul

Orders: [order@signalwayantibody.com](mailto:order@signalwayantibody.com)Support: [tech@signalwayantibody.com](mailto:tech@signalwayantibody.com)

## Description

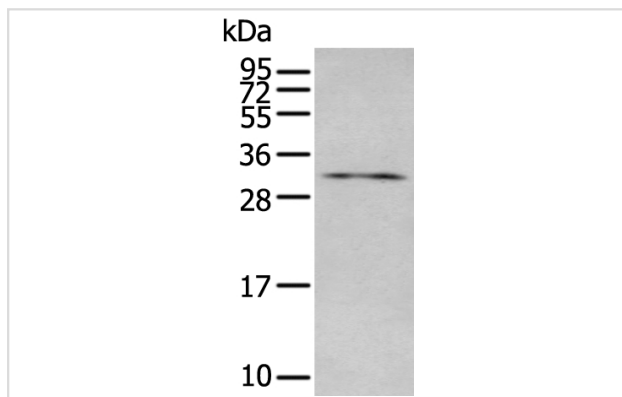
Product Name	LAT Antibody
Host Species	Rabbit
Clonality	Polyclonal
Purification	Antigen affinity purification
Applications	IHC WB
Species Reactivity	Hu
Specificity	The antibody detects endogenous levels of total LAT protein.
Immunogen Type	peptide
Immunogen Description	Synthetic peptide of human LAT
Target Name	LAT
Other Names	LAT1; pp36
Accession No.	Swiss-Prot#: O43561NCBI Gene ID: 27040
Calculated MW	28kd
Concentration	0.8mg/ml
Formulation	Rabbit IgG in pH7.4 PBS, 0.05% NaN <sub>3</sub> , 40% Glycerol.
Storage	Store at -20°C

## Application Details

Western blotting: 1:200-1000

Immunohistochemistry: 1: 20-100

## Images



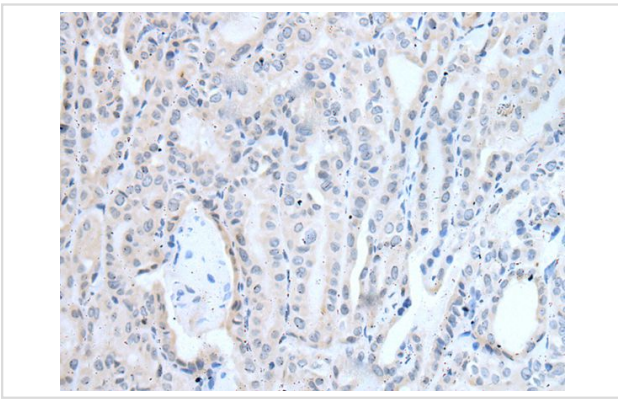
Gel: 12%SDS-PAGE

Lysate: 40 µg, Lane: Human lymph gland tissue lysate,

Primary antibody: LAT antibody at dilution 1/350 dilution,

Secondary antibody: Goat anti rabbit IgG at 1/8000 dilution,

Exposure time: 1 minute



The image on the left is immunohistochemistry of paraffin-embedded Human thyroid cancer tissue using LAT Antibody at dilution 1/30, on the right is treated with synthetic peptide. (Original magnification: x200)

## Background

The protein encoded by this gene is phosphorylated by ZAP-70/Syk protein tyrosine kinases following activation of the T-cell antigen receptor (TCR) signal transduction pathway. This transmembrane protein localizes to lipid rafts and acts as a docking site for SH2 domain-containing proteins. Upon phosphorylation, this protein recruits multiple adaptor proteins and downstream signaling molecules into multimolecular signaling complexes located near the site of TCR engagement. Alternative splicing results in multiple transcript variants encoding different isoforms.

Note: This product is for in vitro research use only and is not intended for use in humans or animals.