

## ADCY2 Antibody

Catalog No: #43960

Package Size: #43960-1 50ul #43960-2 100ul

Orders: [order@signalwayantibody.com](mailto:order@signalwayantibody.com)Support: [tech@signalwayantibody.com](mailto:tech@signalwayantibody.com)

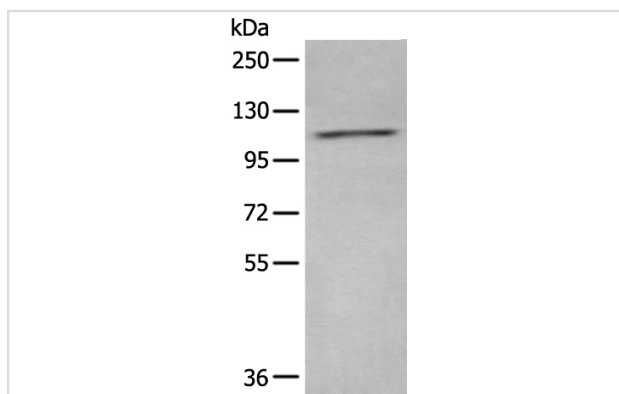
## Description

|                       |   |
|-----------------------|---|
| Product Name          | ADCY2 Antibody  |
| Host Species          | Rabbit  |
| Clonality             | Polyclonal  |
| Purification          | Antigen affinity purification                                   |
| Applications          | WB  |
| Species Reactivity    | Hu Ms Rt  |
| Specificity           | The antibody detects endogenous levels of total ADCY2 protein.  |
| Immunogen Type        | peptide   |
| Immunogen Description | Synthetic peptide of human ADCY2                                |
| Target Name           | ADCY2   |
| Other Names           | AC2; HBAC2  |
| Accession No.         | Swiss-Prot#: Q08462NCBI Gene ID: 108                            |
| Calculated MW         | 124kd   |
| Concentration         | 0.5mg/ml  |
| Formulation           | Rabbit IgG in pH7.4 PBS, 0.05% NaN <sub>3</sub> , 40% Glycerol. |
| Storage               | Store at -20°C  |

## Application Details

Western blotting: 1:200-1000

## Images



Gel: 6%SDS-PAGE

Lysate: 40 µg, Lane: 293T cell lysate,

Primary antibody:ADCY2 antibody at dilution 1/200 dilution,

Secondary antibody: Goat anti rabbit IgG at 1/8000 dilution,

Exposure time: 10 seconds

## Background

This gene encodes a member of the family of adenylate cyclases, which are membrane-associated enzymes that catalyze the formation of the secondary messenger cyclic adenosine monophosphate (cAMP). This enzyme is insensitive to Ca(2+)/calmodulin, and is stimulated by the G protein beta and gamma subunit complex.

## Published Papers

---

el at., circSLC25A13 acts as a ceRNA to regulate AML progression via miR-616-3p/ADCY2 axis InMol CarcinogOn2023 OctbyWenwen Wei , Jiajia Pan et al..PMID:37493101, , (2023)

[PMID:37493101](#)

---

---

Note: This product is for in vitro research use only and is not intended for use in humans or animals.